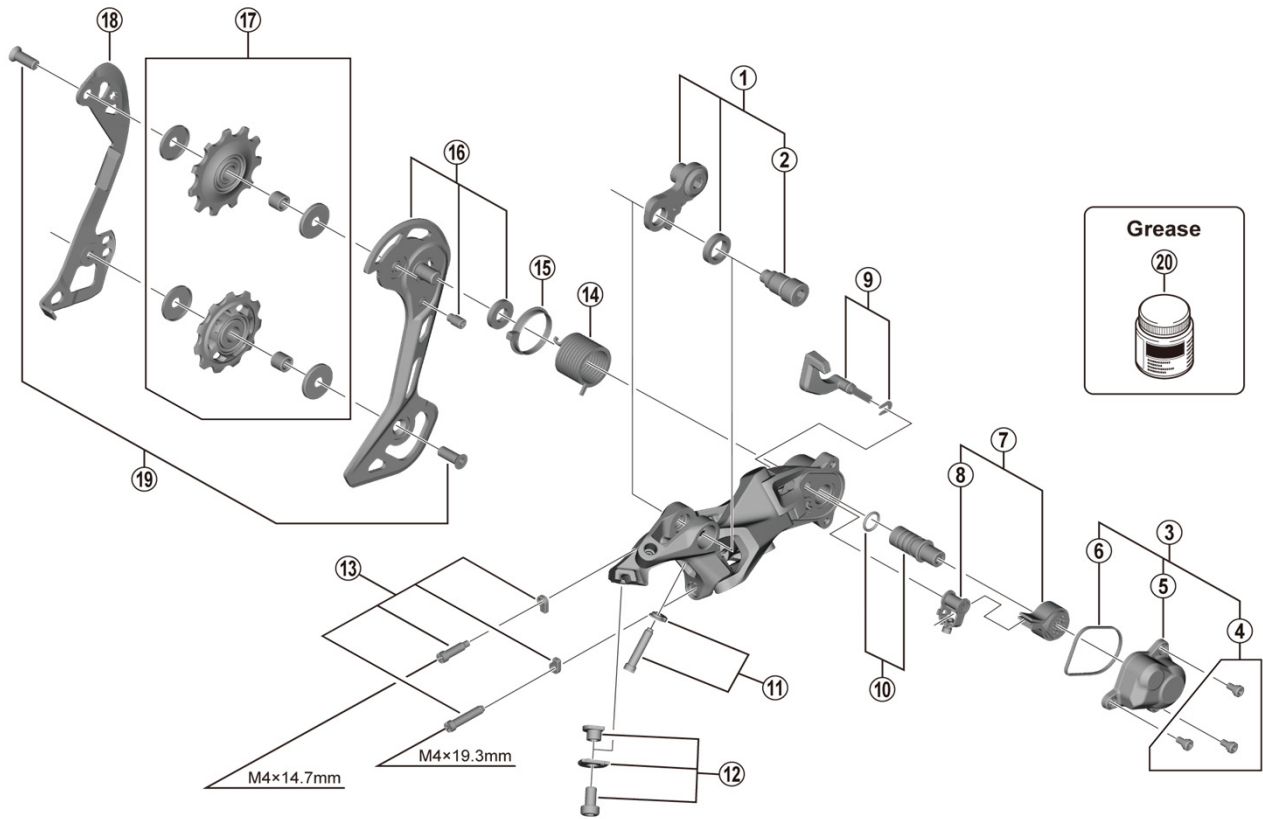


# DEORE Rear Derailleur

## RD-M5120-SGS 11/10-speed



ITEM NO.	SHIMANO CODE NO.	DESCRIPTION	INTERCHANGEABILITY	
			RD-M4120	RD-M6000-GS
1	Y3HM98020	Bracket Axle Unit (for normal type)	A	B
2	Y3HM000F0	B-Axle 2 (for Direct Mount type)	A	
3	-	P-Cover Unit		
4	Y5Y198070	P-Cover Screw Set (3 pcs.)		A
5	-	P-Cover		
6	Y5RT16000	P-Cover Packing		A
7	Y3GF98040	Stabilizer Unit		A
8	Y3E498040	Cam Unit		A
9	Y5YX98040	Switch Lever Unit & Fixing Plate		A
10	Y5PV98060	P-Axle & O-Ring		A
11	Y3HM98040	End Adjust Screw (M4 x 19.3) & Plate	A	B
12	Y3HM98050	Cable Fixing Bolt Unit	A	
13	Y3HM98060	Stroke Adjusting Screws & Plate	A	B
14	Y5PV17000	P-Tension Spring		A
15	Y5PV24000	P-Seal Ring		A
16	Y3HM98070	Outer Plate Assembly (SGS)		B
17	Y3HM98010	Tension & Guide Pulley Set	A	B
18	Y3HM000B0	Inner Plate (SGS)	A	A
19	Y3HM98080	Pulley Screw (M5 x 13.7) 2 pcs.	A	B
20	Y04121000	New Grease for Stabilizer (Net. 50g)		A

A: Same parts.

B: Parts are usable, but differ in materials, appearance, finish, size, etc.

Absence of mark indicates non-interchangeability.

Specifications are subject to change without notice.

May-2020-4676

© Shimano Inc. I

# SHIMANO