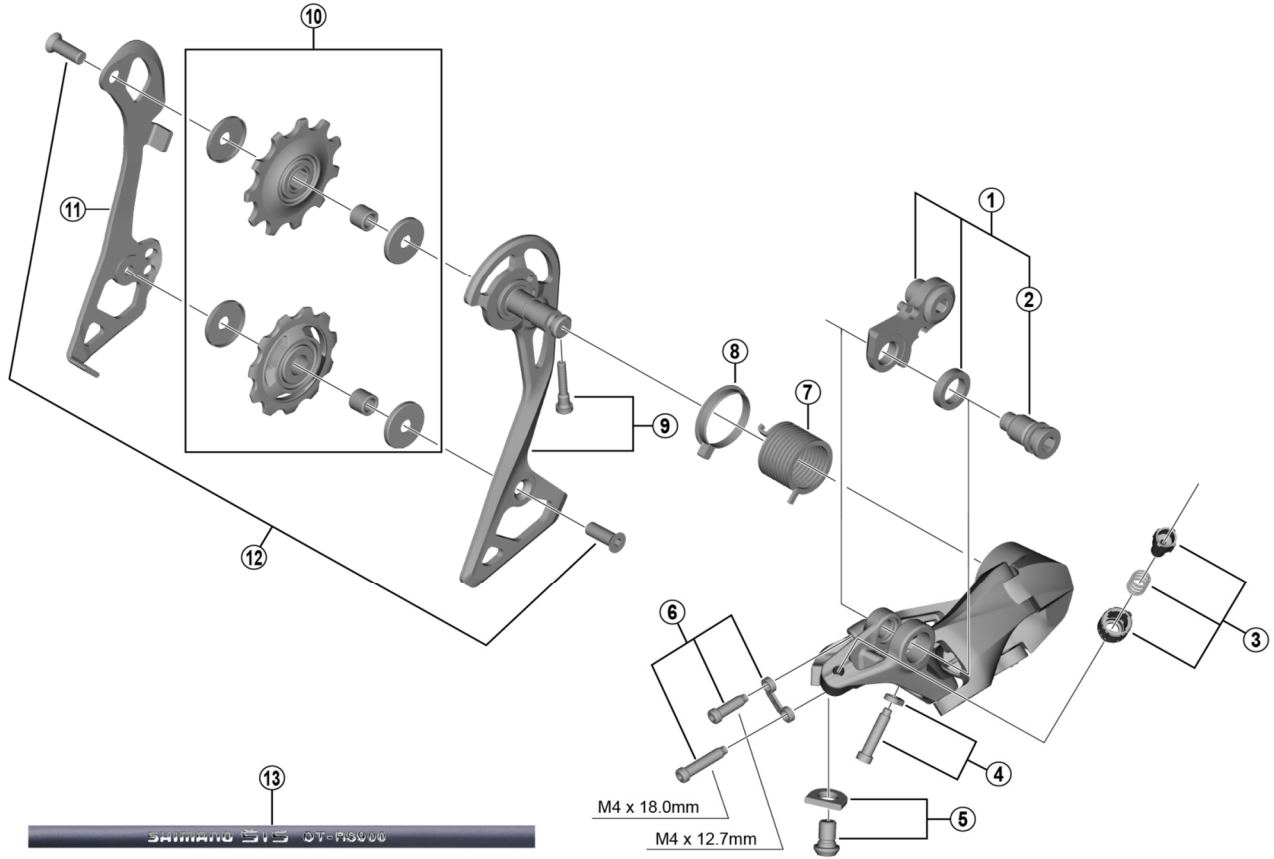


SHIMANO 105 Rear Derailleur (11-speed)  
**RD-R7000-GS** Black / Silver



ITEM NO.	SHIMANO CODE NO.	DESCRIPTION
1	Y3F398020	Bracket Axle Unit (for normal type)
2	Y3F358000	B-Axle 2 (for Direct Mount type)
3	Y3F398030	Cable Adjusting Bolt Unit
4	Y3E998040	End Adjusting Bolt (M4 x 18) & Plate
5	Y3F398040	Cable Fixing Bolt & Plate
6	Y3E998060	Stroke Adjusting Bolts & Plate
7	Y5PV17000	P-Tension Spring
8	Y5PV24000	P-Seal Ring
9	Y3F398060	Outer Plate & Fixing Bolt
10	Y3F398010	Tention & Guide Pulley Set
11	Y3F316000	Inner Plate
12	Y5V598140	Pulley Bolt (2 pcs.)
13	Y0BM98011	OT-RS900 (Black) 240 mm x 10 pcs. (with Sealed Outer Cap & Outer Cap with Long Tongue)
	Y0BM98021	OT-RS900 (White) 240 mm x 10 pcs. (with Sealed Outer Cap & Outer Cap with Long Tongue)
	Y0BM98031	OT-RS900 (Red) 240 mm x 10 pcs. (with Sealed Outer Cap & Outer Cap with Long Tongue)
	Y0BM98041	OT-RS900 (High-tech gray) 240 mm x 10 pcs. (with Sealed Outer Cap & Outer Cap with Long Tongue)

Apr.-2018-4338  
 © Shimano Inc. I

Specifications are subject to change without notice.

**SHIMANO**