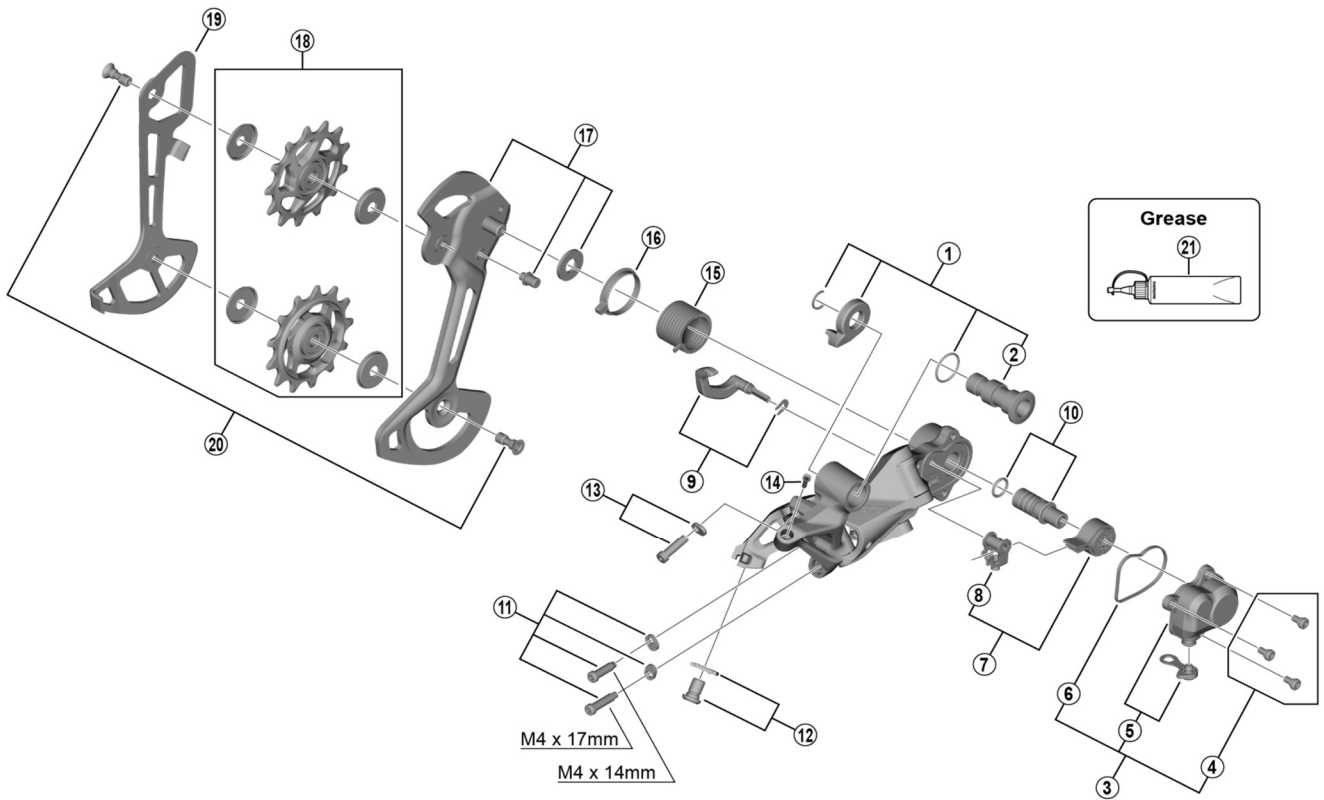


XTR Rear Derailleur RD-M9120-SGS 12-speed



RD-M9000

ITEM NO.	SHIMANO CODE NO.	DESCRIPTION	INTERCHANGE-ABILITY
1	Y3FA98010	Bracket Axle Unit	
2	Y3FA42000	B-Axle	
3	Y3FB98010	P-Cover Unit	
4	Y5Y198070	P-Cover Bolt Set (3 pcs.)	
5	Y3FB98020	P-Cover & Cap	
6	Y5PV25000	P-Cover Packing	A
7	Y3E498030	Stabilizer Unit	A
8	Y3E498040	Cam Unit	A
9	Y3FB98030	Switch Lever Unit & Fixing Plate	
10	Y5PV98060	P-Axle & O-Ring	A
11	Y3FB98040	Stroke Adjusting Screws & Plate	
12	Y5PV98080	Cable Fixing Bolt (M6 x 9.2) & Plate	A
13	Y5PV98070	End Adjust Bolt (M4 x 14.1) & Plate	A
14	Y5PV48000	Cover with tongue	A
15	Y5PV17000	P-Tension Spring	A
16	Y5PV24000	P-Seal Ring	A
17	Y3FB98050	Outer Plate Assembly (SGS)	
18	Y3FA98090	Tension & Guide Pulley Set	
19	Y3FA26000	Inner Plate (SGS)	
20	Y5XX98130	Pulley Bolt (2 pcs.)	A
* 21	Y04121000	Grease for Stabilizer (Net. 50g)	A

A: Same parts.

B: Parts are usable, but differ in materials, appearance, finish, size, etc.

Absence of mark indicates non-interchangeability.

Specifications are subject to change without notice.

Jul.-2018-4388A

© Shimano Inc. I

SHIMANO