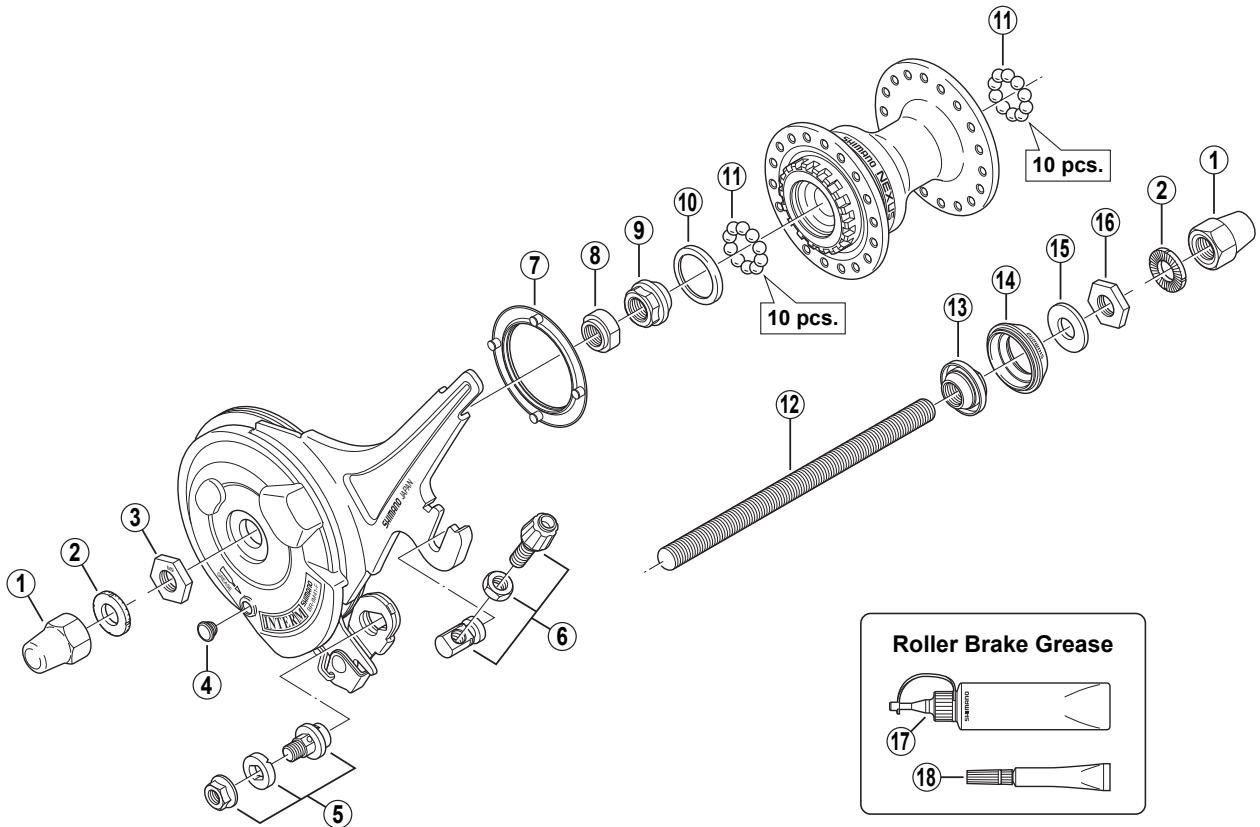


NEXUS FRONT HUB w/Hi-Power Roller Brake  
**HB-IM40/HB-IM30** Front Hub  
**BR-IM41-F** Inter-M Brake



ITEM NO.	SHIMANO CODE NO.	DESCRIPTION
1	Y-314 14210	Cap Nut (M9)
2	Y-21D 03000	Washer (1.8 mm)
3	Y-22V 05110	Brake Unit Fixing Nut (M9 x 3.5 mm)
* 4	Y-75F 11000	Grease Hole Cap
* 5	Y-75P 98100	Inner Cable Fixing Bolt Unit (Standard/Black)
	Y-75M 98070	Inner Cable Fixing Bolt Unit (DX spec./Silver)
* 6	Y-75P 98120	Brake Cable Adjusting Bolt Unit (Standard/Black)
	Y-75P 98080	Brake Cable Adjusting Bolt Unit (DX spec./Silver)
7	Y-75P 17000	Seal Ring for Brake
* 8	Y-22V 0400R	Left Hand Cone Lock Nut (M9 x 7.1 mm)
9	Y-22V 03001	Left Hand Cone (M9 x 12.12 mm)
10	Y-22V 06000	Left Hand Dust Cap
11	Y-000 91210	Steel Ball (3/16") 20 pcs.
12	Y-21D 05200	Hub Axle (M9 x 140 mm)
	Y-21D 05400	Hub Axle (M9 x 145 mm)
13	Y-21H 98080	Right Hand Cone (M9 x 10.4 mm) w/Dust Cover
14	Y-21H 04000	Rubber Seal
15	Y-21H 10200	Right Hand Washer (2 mm)
16	Y-21D 04010	Right Hand Lock Nut (M9 x 3 mm)
17	Y-041 20400	Roller Brake Grease (Net. 100g)
18	Y-041 40020	Roller Brake Grease (Net. 10g)

Aug.-2009-1562F  
 © Shimano Inc.

Specifications are subject to change without notice.

**SHIMANO**