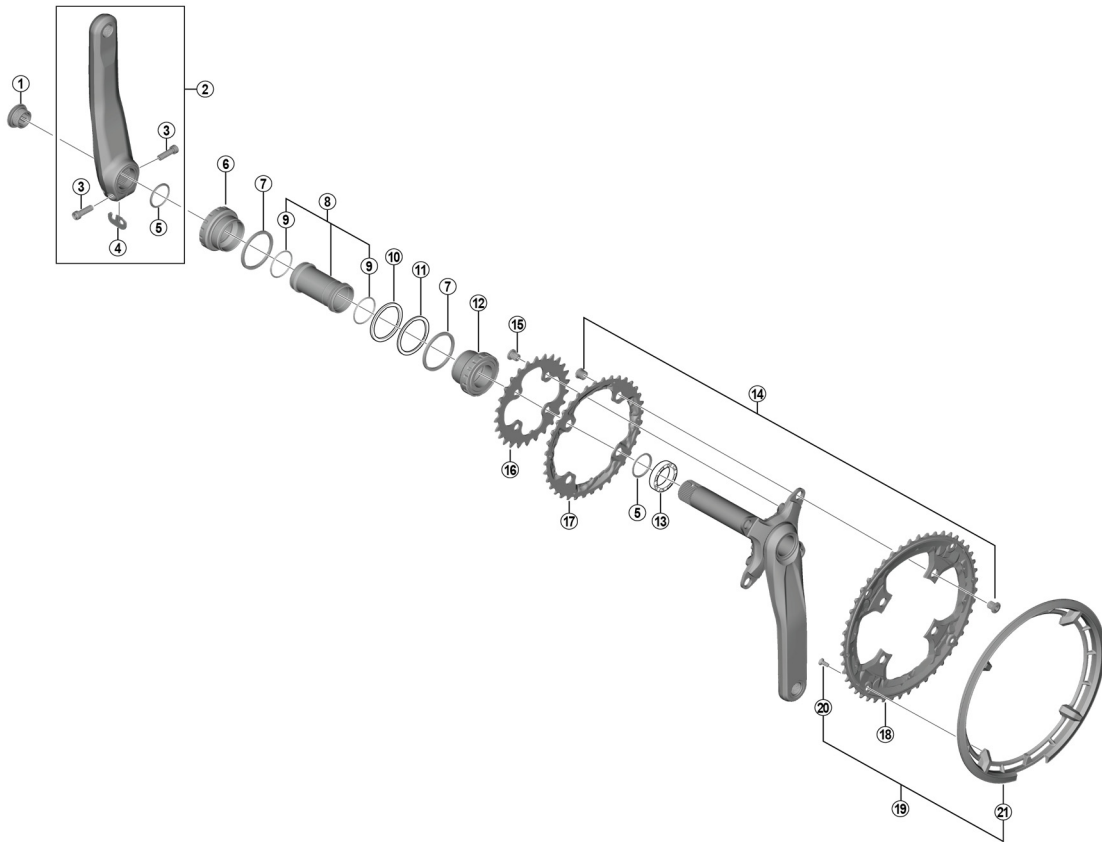


DEORE Crankset FC-T6010 SM-BB52



• Chaining teeth combinations: 48-36-26T

• Bolt circle diameter: 104 mm...(For outer gear and middle gear), 64 mm...(For inner gear)

FC-T551
FC-T611

ITEM NO.	SHIMANO CODE NO.	DESCRIPTION	INTERCHANGEABILITY	
			FC-T551	FC-T611
1	Y1F811100	Crank Arm Fixing Bolt	A	B
2	Y1WC98030	Left Hand Crank Arm Unit 170 mm (Black)	B	B
	Y1WE98030	Left Hand Crank Arm Unit 170 mm (Silver)	B	B
	Y1WC98040	Left Hand Crank Arm Unit 175 mm (Black)	B	B
	Y1WE98040	Left Hand Crank Arm Unit 175 mm (Silver)	B	B
3	Y1GS00030	Clamp Bolt (M6 x 19)	A	A
4	Y1FU98120	Plate	A	
5	Y1F316000	Ring	A	A
6	Y1RP98050	Left Hand Adapter (B.C.1.37" x 24T) English Thread (SM-BB52)	A	A
7	Y1F813000	Spacer (2.5 mm)	A	A
8	Y1J898060	Inner Cover & O-Ring	A	A
9	Y1TF21000	O-Ring	A	A
10	Y1F813100	Spacer (1.8 mm)	A	A
11	Y1F813110	Spacer (0.7 mm)	A	A
12	Y1RP98060	Right Hand Adapter (B.C.1.37" x 24T) English Thread (SM-BB52)	A	A
13	Y1F913000	Spacer (6.5 mm)	A	
14	Y1NL98110	Gear Fixing Bolt (M8 x 8.5 / 1 Unit = 4 pcs.) & Nut (1 Unit = 4 pcs.)		A
15	Y1LV98060	Inner Gear Fixing Bolt (M8 x 8.5 / 1 Unit = 4 pcs.)	A	A
16	Y1LD26000	Chainring 26T	B	A
17	Y1NL98020	Chainring 36T-AL		
18	Y1WE98010	Chainring 48T-AL (Black) for Chain Guard	B	B
	Y1WE98020	Chainring 48T-AL (Silver) for Chain Guard	B	B
19	Y1WE98050	Chain Guard (Black/1 pc.) & Fixing Screws (1 Unit = 4 pcs.)	B	B
	Y1WE98060	Chain Guard (Silver/1 pc.) & Fixing Screws (1 Unit = 4 pcs.)	B	B
20	Y1D298010	Chain Guard Fixing Screw (1 Unit = 4 pcs.)	B	B
21	Y1WE98070	Chain Guard (Black)	B	B
	Y1WE98080	Chain Guard (Silver)	B	B

A: Same parts.

B: Parts are usable, but differ in materials, appearance, finish, size, etc.

Absence of mark indicates non-interchangeability.

Specifications are subject to change without notice.

Jun.-2017-4188

© Shimano Inc. I

SHIMANO