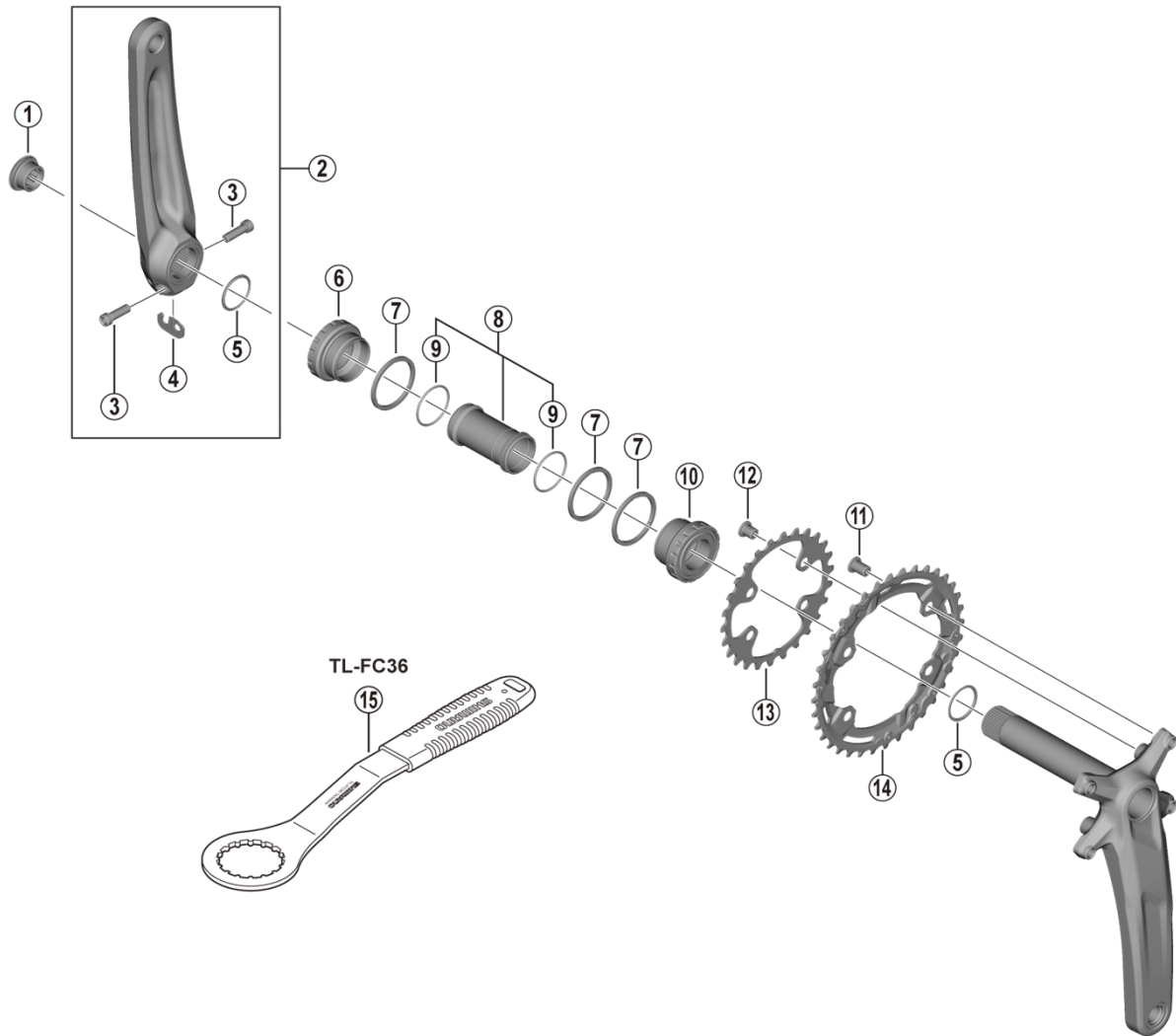


DEORE Crankset  
**FC-M5100-2 FC-M5100-B2**  
**SM-BB52**



FC-M6000-2/B2

FC-M7000

FC-M4100-2/B2

- **Chainring teeth combinations: 36-26T**
- **Bolt circle diameter: 96 mm...(For outer gear), 64 mm...(For inner gear)**

ITEM NO.	SHIMANO CODE NO.	DESCRIPTION	INTERCHANGEABILITY		
1	Y1F811100	Crank Arm Fixing Screw	A	A	A
2	Y0LA98010	Left Hand Crank Arm Unit 170 mm	B	B	A
	Y0LA98020	Left Hand Crank Arm Unit 175 mm	B	B	A
3	Y1GS00030	Clamp Screw (M6 x 19)	A	A	A
4	Y1FU98120	Plate	A	A	A
5	Y1F316000	Ring	A	A	A
6	Y1RP98050	Left Hand Adapter (B.C.1.37" x 24T) English Thread (SM-BB52)	A	B	A
7	Y1F813000	Spacer (2.5 mm)	A	A	A
8	Y1J898060	Inner Cover & O-Ring	A	A	A
9	Y1TF21000	O-Ring	A	A	A
10	Y1RP98060	Right Hand Adapter (B.C.1.37" x 24T) English Thread (SM-BB52)	A	B	A
11	Y0LB98020	Gear Fixing Screw (M8 x 11.5 / 1 Unit = 4 pcs.) for FC-M5100-2	B	B	A
	Y1LV98060	Gear Fixing Screw (M8 x 8.5 / 1 Unit = 4 pcs.) for FC-M5100-B2	B	B	A
12	Y1LV98060	Gear Fixing Screw (M8 x 8.5 / 1 Unit = 4 pcs.)	A	B	A
13	Y0LB26000	Chainring 26T-BC		B	
14	Y0LB98010	Chainring 36T-BC			
15	Y13098000	TL-FC36 Adapter Tool	A	A	A

A: Same parts.

B: Parts are usable, but differ in materials, appearance, finish, size, etc.

Absence of mark indicates non-interchangeability.

Specifications are subject to change without notice.

Jun.-2020-4756

© Shimano Inc. I

**SHIMANO**