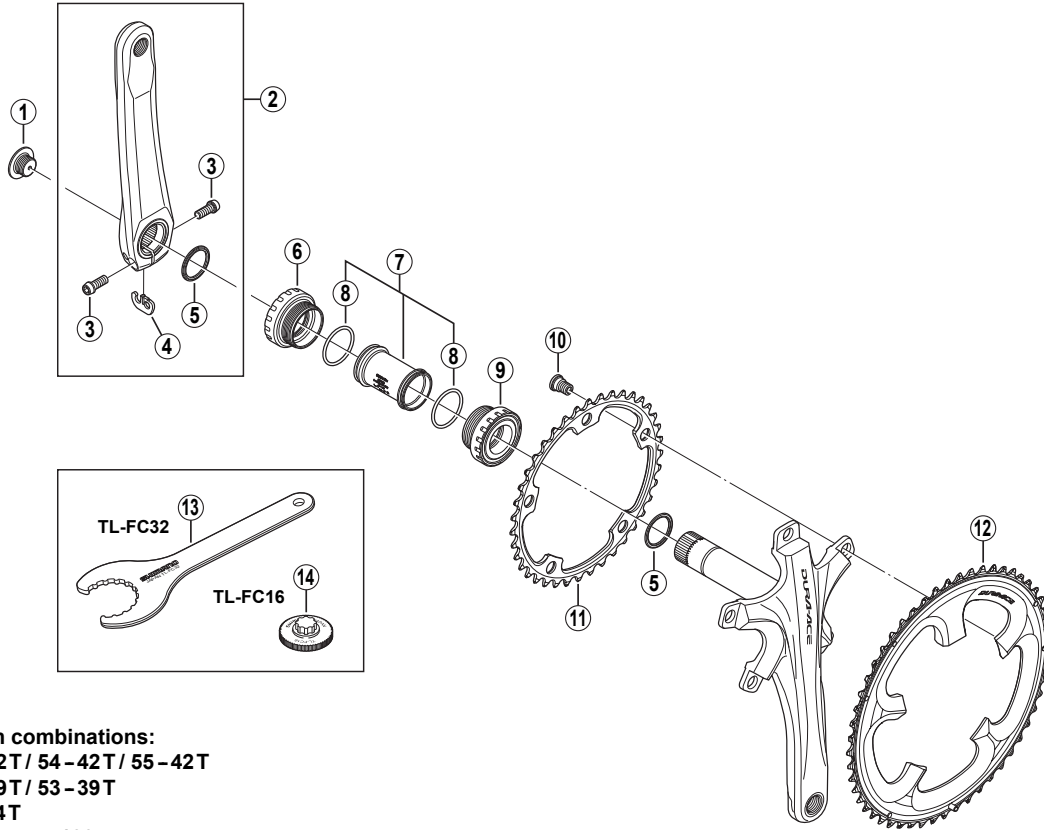


DURA-ACE Front Chainwheel FC-7900



• **Chaining teeth combinations:**

A-Type... 53 - 42T / 54 - 42T / 55 - 42T

B-Type... 52 - 39T / 53 - 39T

E-Type... 56 - 44T

• **Bolt circle diameter: 130 mm**

FC-7803
FC-7800

ITEM NO.	SHIMANO CODE NO.	DESCRIPTION	INTERCHANGEABILITY	
1	Y-1KY 08000	Crank Arm Fixing Bolt		
2	Y-1KY 98040	Left Hand Crank Arm 165 mm		
	Y-1KY 98050	Left Hand Crank Arm 167.5 mm		
	Y-1KY 98060	Left Hand Crank Arm 170 mm		
	Y-1KY 98070	Left Hand Crank Arm 172.5 mm		
	Y-1KY 98080	Left Hand Crank Arm 175 mm		
	Y-1KY 98090	Left Hand Crank Arm 177.5 mm		
	Y-1KY 98100	Left Hand Crank Arm 180 mm		
3	Y-1E5 12100	Clamp Bolt (M6 x 15)	A	A
4	Y-1GE98050	Plate	A	A
5	Y-1F3 16000	Ring	A	A
6	Y-1KY 98110	Left Hand Adapter (B.C.1.37" x 24T) English Thread		
	Y-1KY 98120	Left Hand Adapter (M36 x 24T) Italian Thread		
7	Y-1KY 98130	Inner Cover & O-Ring		
8	Y-1TF 21000	O-Ring	A	A
9	Y-1KY 98140	Right Hand Adapter (B.C.1.37" x 24T) English Thread		
	Y-1KY 98150	Right Hand Adapter (M36 x 24T) Italian Thread		
10	Y-1KY 98160	Gear Fixing Bolt (5 pcs.)		
11	Y-1KY 39000	Chainring 39T		
	Y-1KY 42000	Chainring 42T		
	Y-1KY 44000	Chainring 44T		
* 12	Y-1KY 98010	Chainring 52T-B		
	Y-1KY 98020	Chainring 53T-A		
	Y-1KY 98030	Chainring 53T-B		
	Y-1KY 98170	Chainring 54T-A		
* 12	Y-1KY 98180	Chainring 55T-A		
* 12	Y-1KY 98190	Chainring 56T-E		
13	Y-130 09210	TL-FC32 Adapter Installation Tool	A	A
14	Y-130 09220	TL-FC16 Crank Arm Installation Tool	A	A

A: Same parts.

B: Parts are usable, but differ in materials, appearance, finish, size, etc.

Absence of mark indicates non-interchangeability.

0901-2877A

Specifications are subject to change without notice.

SHIMANO