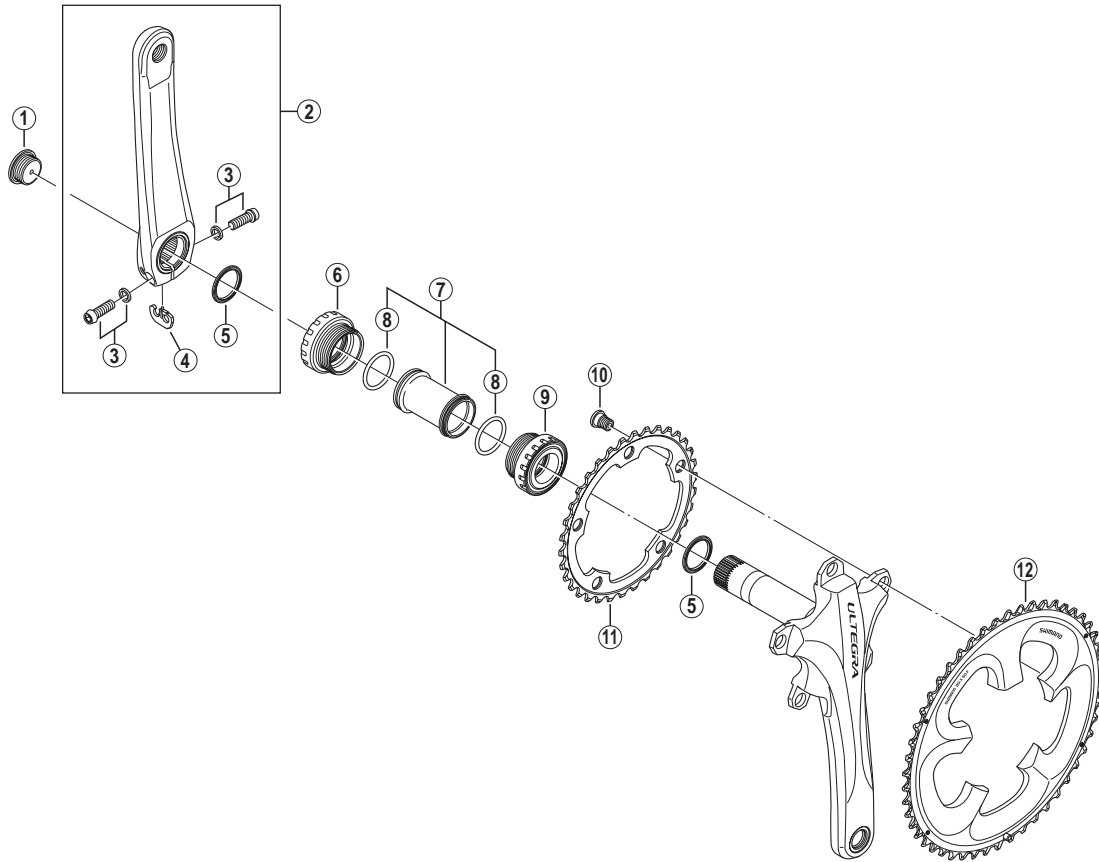


ULTEGRA Front Chainwheel

**FC-6750** Silver Version

**FC-6750-G** Glossy Grey Version



• Bolt circle diameter: 110 mm

ITEM NO.	SHIMANO CODE NO.	DESCRIPTION	INTERCHANGEABILITY			
			FC-7950	FC-6700	FC-5750	
1	Y1KS13000	Crank Arm Fixing Bolt	B	A	A	
*	Y1LJ98010	Left Hand Crank Arm 165 mm for FC-6750	B	A	B	
	Y1LJ98110	Left Hand Crank Arm 165 mm for FC-6750-G	B	A	B	
	Y1LJ98020	Left Hand Crank Arm 170 mm for FC-6750	B	A	B	
*	2	Y1LJ98120	Left Hand Crank Arm 170 mm for FC-6750-G	B	A	B
	Y1LJ98030	Left Hand Crank Arm 172.5 mm for FC-6750	B	A	B	
*	Y1LJ98130	Left Hand Crank Arm 172.5 mm for FC-6750-G	B	A	B	
	Y1LJ98040	Left Hand Crank Arm 175 mm for FC-6750	B	A	B	
*	Y1LJ98140	Left Hand Crank Arm 175 mm for FC-6750-G	B	A	B	
3	Y1G398010	Clamp Bolt (M6 x 19) & Washer		A	B	
4	Y1GE98050	Plate	A	A	A	
5	Y1F316000	Ring	A	A	A	
	6	Y1LJ98050	Left Hand Adapter (B.C.1.37" x 24T) English Thread	B	A	B
	Y1LJ98060	Left Hand Adapter (M36 x 24T) Italian Thread	B	A	B	
7	Y1G398150	Inner Cover & O-Ring	B	A	A	
8	Y1TF21000	O-Ring	A	A	A	
	9	Y1LJ98070	Right Hand Adapter (B.C.1.37" x 24T) English Thread	B	A	B
	Y1LJ98080	Right Hand Adapter (M36 x 24T) Italian Thread	B	A	B	
10	Y1KY98160	Gear Fixing Bolt (5 pcs.)	A	A		
*	11	Y1LL34000	Chainring 34T for FC-6750	B		B
	Y1LL34010	Chainring 34T for FC-6750-G	B		B	
*	12	Y1LL98010	Chainring 50T-F for FC-6750			B
	Y1LL98020	Chainring 50T-F for FC-6750-G				B

A: Same parts.

B: Parts are usable, but differ in materials, appearance, finish, size, etc.

Absence of mark indicates non-interchangeability.

Mar.-2011-2956A

© Shimano Inc. I

Specifications are subject to change without notice.

**SHIMANO**