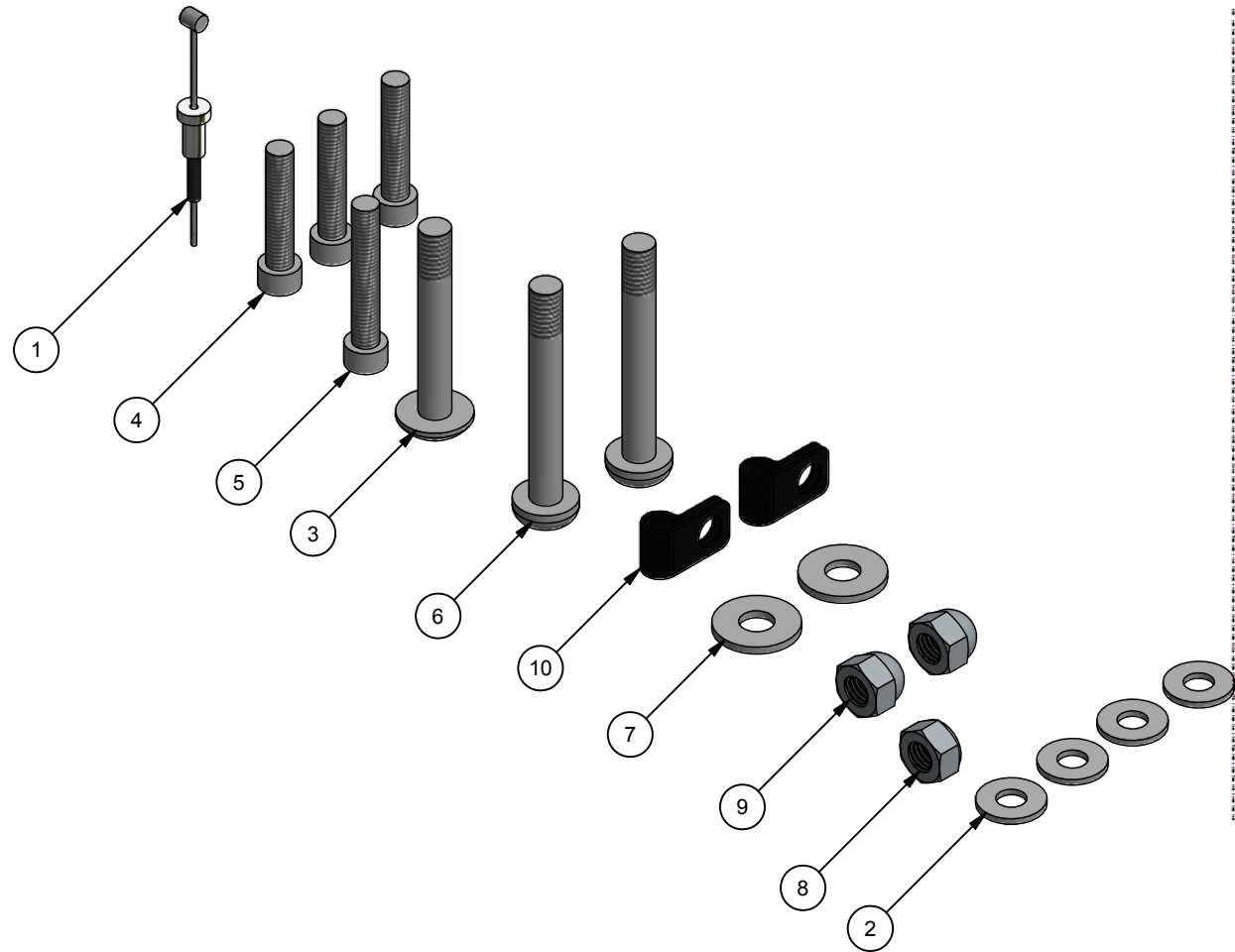




Parts List			
ITEM	QTY	ITEM #	DESCRIPTION
1	1	41191373	HA lockout cable - CHK
2	4	50100612	Washer - 5.6mmID, 12.7mmOD, 1.2mmT
3	1	50190531	Bolt - M6x40 Phillips
4	3	50190583	Bolt - M5x25 - Hexagon Socket Cap Screw
5	1	50190584	Bolt - M5x30 - Hexagon Socket Cap Screw
6	2	50190598	Bolt - M6x46 Phillips 10mm thread
7	2	50190631	Washer - 6.5mmID, 16mmOD, 1.5mmT
8	1	50190709	Nut - M6 Jam Nut
9	2	50190734	Nut - M6 Jam Nut - capped
10	2	50192204	Cable Clamp - 5mm

PART NUMBER 40105162		SHEET 1 OF 1	
REV	ECO NUMBER	DATE	INITIAL
A	2012-101	22/3/13	WF

B



B

A

A

(SP) UPC#: 872299037261

THIS PRINT IS THE CONFIDENTIAL AND PROPRIETARY PROPERTY OF THULE CHILD TRANSPORT SYSTEMS LTD. THE REPRODUCTION OF THIS PRINT, MANUFACTURE OF THE ITEM DESCRIBED HEREON, OR THE DISCLOSURE OF THE SAME IS FORBIDDEN WITHOUT THE EXPRESSED WRITTEN CONSENT OF THE OWNER

MATERIAL N/A
CONDITION N/A
FINISH N/A

UNLESS OTHERWISE SPECIFIED ALL DIMENSIONS ARE IN MILLIMETERS
 PERPENDICULAR SURFACES TO BE SQUARE WITHIN .03
 TOTAL RUNOUT WITHIN .08 ON COMMON DIAMETERS
 ALL DRILLED HOLES TO BE MAX 0.2 mm OVERSIZED
 REMOVE SHARP EDGES .15 MAX
 FILLETS R.15 MAX
 ANGLES ±0°30'
 ALL MACHINED SURFACES
 64 MICRO INCHES

TOLERANCE: DECIMAL
 X = ± 1 mm
 .X = ± .5 mm
 .XX = ± .2 mm

DRAWN WesleyF
DATE 13-03-22
DESCRIPTION Hitch Arm Lockout Cable - CHK (SP)



PART NUMBER
40105162

