

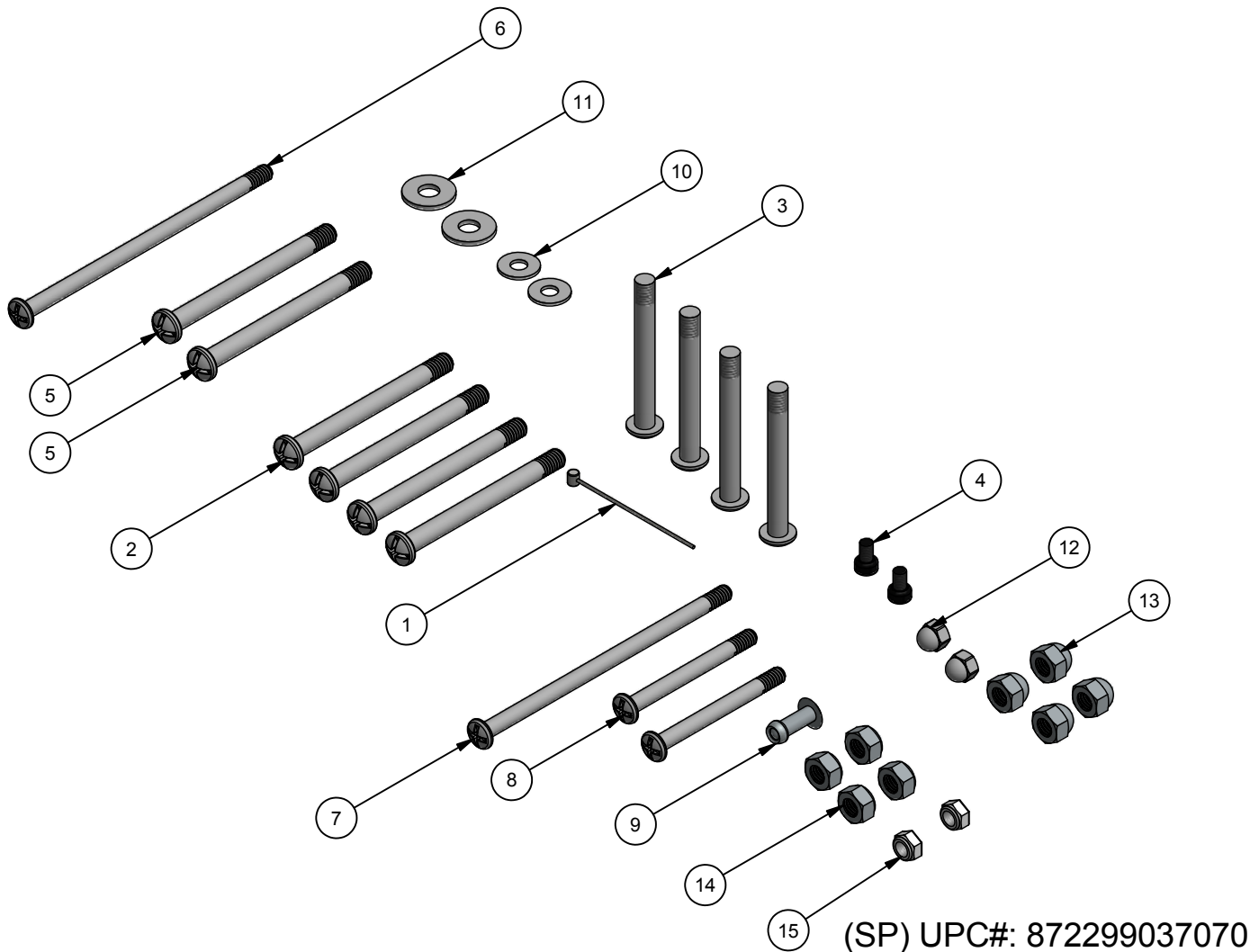
2



1

Parts List			
ITEM	QTY	ITEM #	DESCRIPTION
1	1	41190641	Reclining seat - actuation cable - CHK1
2	4	50190528	Bolt - M6x59 Phillips
3	4	50190587	Bolt - M6x52mm Phillips
4	2	50190588	Bolt - M4x6 socket head cap screw
5	2	50190527	Bolt - M6x67
6	1	50190590	Bolt - M5x110x20mmT
7	1	50190592	Bolt - M5x78x12mmT
8	2	50190579	Bolt - M5x56
9	1	50190830	Rivet - Pop - 5x16
10	2	50190612	Washer - 5.3mmID, 12.7mmOD, 1mmT
11	2	50190631	Washer - 6.5mmID, 16mmOD, 1.5mmT
12	2	50190733	Nut - M5 capped nylon lock nut
13	4	50190734	Nut - M6 Jam Nut - capped
14	4	50190709	Nut - M6 Jam Nut
15	2	50190705	Nut - M5 Lock

PART NUMBER		SHEET	
40105154		1 OF 1	
REV	ECO NUMBER	DATE	INITIAL
A	2012-101	20/3/2013	WF



THIS PRINT IS THE CONFIDENTIAL AND PROPRIETARY PROPERTY OF THULE CHILD TRANSPORT SYSTEMS LTD. THE REPRODUCTION OF THIS PRINT, MANUFACTURE OF THE ITEM DESCRIBED HEREON, OR THE DISCLOSURE OF THE SAME IS FORBIDDEN WITHOUT THE EXPRESSED WRITTEN CONSENT OF THE OWNER

MATERIAL  
N/A

CONDITION  
N/A

FINISH  
N/A

UNLESS OTHERWISE SPECIFIED  
ALL DIMENSIONS ARE IN MILLIMETERS

PERPENDICULAR SURFACES TO BE SQUARE WITHIN .03  
TOTAL RUNOUT WITHIN .08 ON COMMON DIAMETERS  
ALL DRILLED HOLES TO BE MAX 0.2 mm OVERSIZED

REMOVE SHARP EDGES .15 MAX

FILLETS R.15 MAX

ANGLES ±0°30'

ALL MACHINED SURFACES

64 MICRO INCHES

TOLERANCE: DECIMAL

X = ± 1 mm

.X = ± .5 mm

.XX = ± .2 mm



DRAWN

WesleyF

DATE

13-03-20

DESCRIPTION

Reclining seat actuator cable - CHK2 (SP)

PART NUMBER

40105154

**chariot**™

2



1