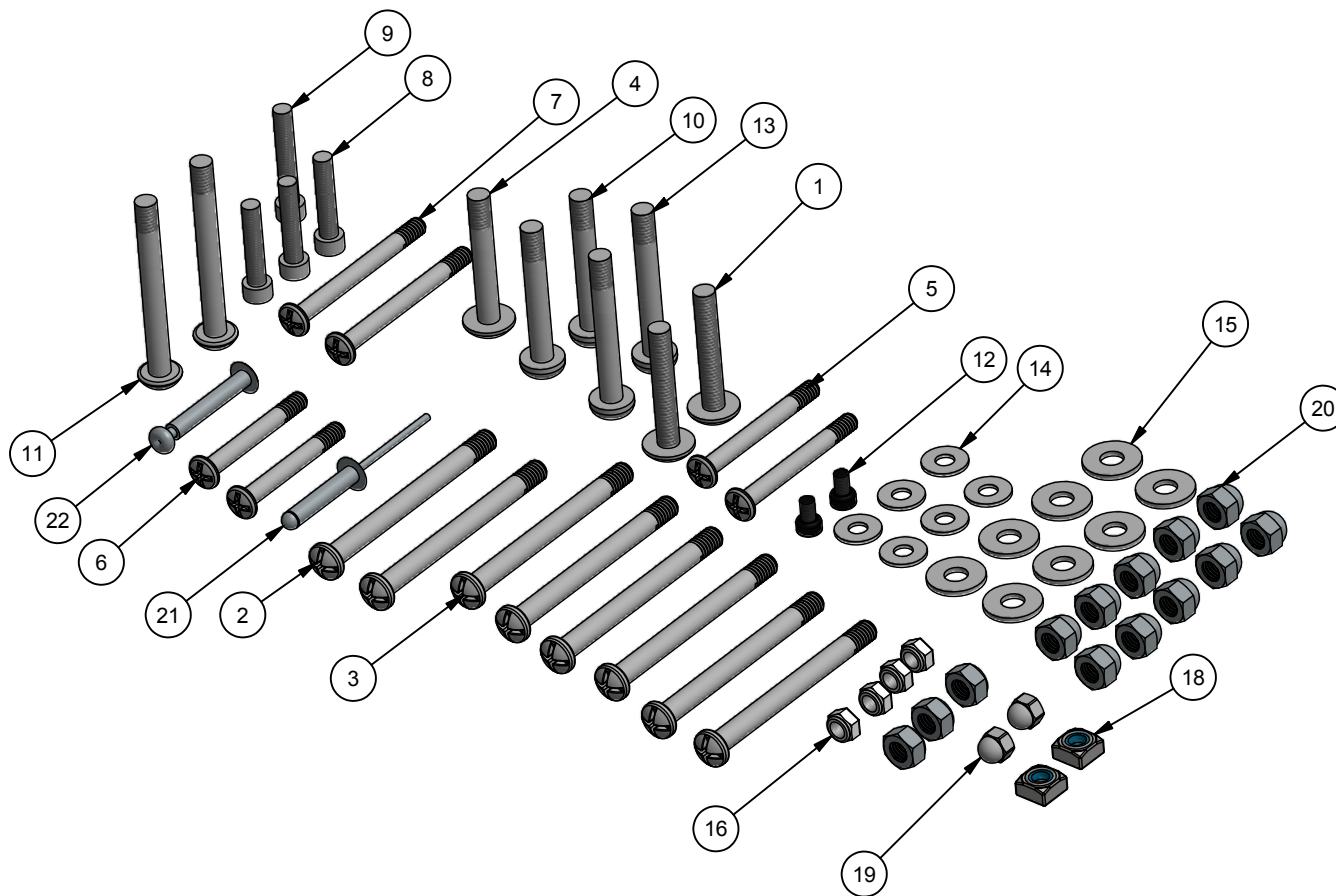




Parts List			
ITEM	QTY	ITEM #	DESCRIPTION
1	2	50190508	Bolt - M6x37 Phillips
2	2	50190527	Bolt - M6x67
3	6	50190528	Bolt - M6x59 Phillips
4	1	50190531	Bolt - M6x40 Phillips
5	2	50190576	Bolt - M5x45
6	2	50190578	Bolt - M5x35
7	2	50190579	Bolt - M5x56
8	3	50190583	Bolt - M5x25 - Hexagon Socket Cap Screw
9	1	50190584	Bolt - M5x30 - Hexagon Socket Cap Screw
10	2	50190585	Bolt - M6x42 Phillips 10mm thread
11	2	50190586	Bolt - M6x42, 27mm thread Phillips
12	2	50190588	Bolt - M4x6 socket head cap screw
13	2	50190598	Bolt - M6x46 Phillips 10mm thread
14	6	50190612	Washer - 5.3mmID, 12.7mmOD, 1mmT
15	8	50190631	Washer - 6.5mmID, 16mmOD, 1.5mmT
16	4	50190705	Nut - M5 Lock
17	3	50190709	Nut - M6 Jam Nut
18	2	50190713	Nut - square nylon lock M6
19	2	50190733	Nut - M5 capped nylon lock nut
20	10	50190734	Nut - M6 Jam Nut - capped
21	1	50190828	Rivet - Pop - 5x25
22	1	50190829	Rivet - Pop - 5 x 30

PART NUMBER <b>40105105</b>		SHEET <b>1 OF 1</b>	
REV	ECO NUMBER	DATE	INITIAL
A	2012-101	20/3/13	WF



(SP) UPC#: 872299036240

THIS PRINT IS THE CONFIDENTIAL AND PROPRIETARY PROPERTY OF THULE CHILD TRANSPORT SYSTEMS LTD. THE REPRODUCTION OF THIS PRINT, MANUFACTURE OF THE ITEM DESCRIBED HEREON, OR THE DISCLOSURE OF THE SAME IS FORBIDDEN WITHOUT THE EXPRESSED WRITTEN CONSENT OF THE OWNER

MATERIAL N/A
CONDITION N/A
FINISH N/A

**UNLESS OTHERWISE SPECIFIED ALL DIMENSIONS ARE IN MILLIMETERS**  
 PERPENDICULAR SURFACES TO BE SQUARE WITHIN .03  
 TOTAL RUNOUT WITHIN .08 ON COMMON DIAMETERS  
 ALL DRILLED HOLES TO BE MAX 0.2 mm OVERSIZED  
 REMOVE SHARP EDGES .15 MAX  
 FILLETS R.15 MAX  
 ANGLES ±0°30'  
 ALL MACHINED SURFACES  
 64 MICRO INCHES

TOLERANCE: DECIMAL  
 X = ± 1 mm  
 .X = ± .5 mm  
 .XX = ± .2 mm

DRAWN WesleyF
DATE 20/03/2013
DESCRIPTION Body hardware kit - CHK (SP)



PART NUMBER  
**40105105**

