

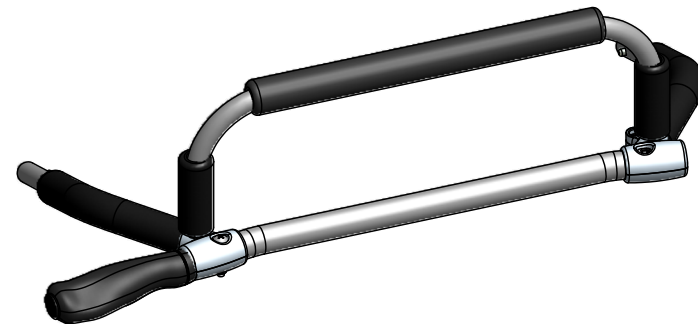


| Parts List | | | |
|------------|-----|----------|--|
| ITEM | QTY | PART # | DESCRIPTION |
| 1 | 1 | 40191353 | Handlebar - CX2 - U-Frame Sub-Assy |
| 2 | 1 | 41191342 | Handlebar - CX2 - Middle |
| 3 | 1 | 41191350 | Handlebar - CX - Riser L |
| 4 | 1 | 41191351 | Handlebar - CX - Riser R |
| 5 | 1 | 41191353 | Handlebar - CX - Stub End L |
| 6 | 2 | 41192130 | Hollow Plug Glide - Cut |
| 7 | 2 | 50101004 | Wire Button |
| 8 | 1 | 50102101 | Ergonomic Kraton Grip - Left |
| 9 | 1 | 50102103 | End Plug - Kraton Grip |
| 10 | 3 | 50102105 | Foam Grip - 330mm HD Phthalate - free |
| 11 | 1 | 50190508 | Bolt - M6x37 Phillips |
| 12 | 2 | 50190522 | Bolt - M6x55 Phillips |
| 13 | 1 | 50190606 | Washer - Nylon 6.4mmID, 12.7mmOD, 2mmT |
| 14 | 2 | 50190631 | Washer - 6.5mmID, 16mmOD, 1.5mmT |
| 15 | 1 | 50190709 | Nut - M6 Jam Nut |
| 16 | 2 | 50191205 | Spring Clip |
| 17 | 2 | 50193110 | Cargo Rack Bracket Tongue |
| 18 | 2 | 50193111 | Cargo Rack Bracket Groove |

| | | | |
|-------------------------|------------|-----------------|---------|
| PART NUMBER 40105019 | | SHEET 1 OF 1 | |
| REV | ECO NUMBER | DATE | INITIAL |
| | ENG | | |
| A | 2011-43 | 07/22/11 | GEM |

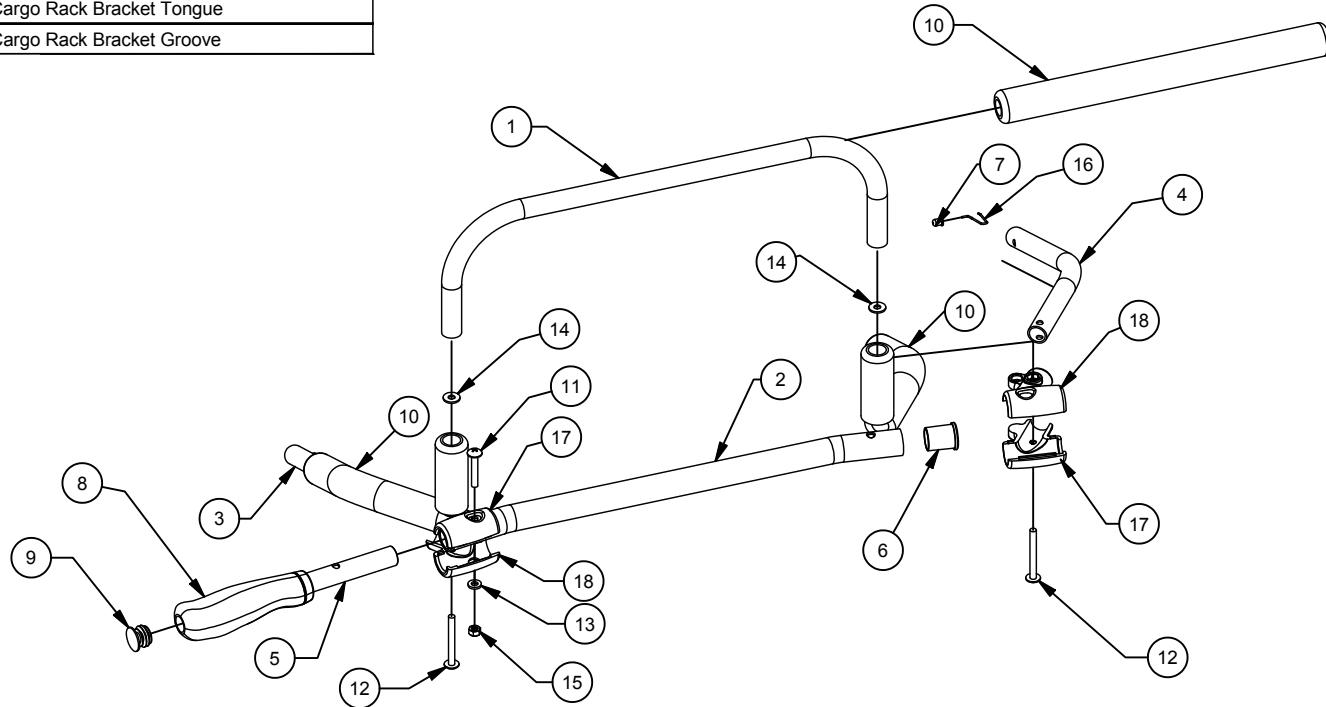
B

B



A

A



THIS PRINT IS THE CONFIDENTIAL AND PROPRIETARY PROPERTY OF CHARIOT CARRIERS INC. THE REPRODUCTION OF THIS PRINT, MANUFACTURE OF THE ITEM DESCRIBED HEREON, OR THE DISCLOSURE OF THE SAME IS FORBIDDEN WITHOUT THE EXPRESSED WRITTEN CONSENT OF THE OWNER

MATERIAL
N/A

CONDITION
N/A

FINISH
N/A

UNLESS OTHERWISE SPECIFIED ALL DIMENSIONS ARE IN MILLIMETERS

PERPENDICULAR SURFACES TO BE SQUARE WITHIN .03
TOTAL RUNOUT WITHIN .08 ON COMMON DIAMETERS
ALL DRILLED HOLES TO BE MAX 0.2 mm OVERSIZED

REMOVE SHARP EDGES .15 MAX
FILLETS R.15 MAX
ANGLES ± 0° 30'
ALL MACHINED SURFACES
64 MICRO INCHES

TOLERANCE: DECIMAL
X = ± 1 mm
X = ± .5 mm
XX = ± .2 mm

DRAWN
GMESZAROS

DATE
7/22/11



DESCRIPTION
Handlebar Main Assy (SP) CX2

PART NUMBER
40105019

