

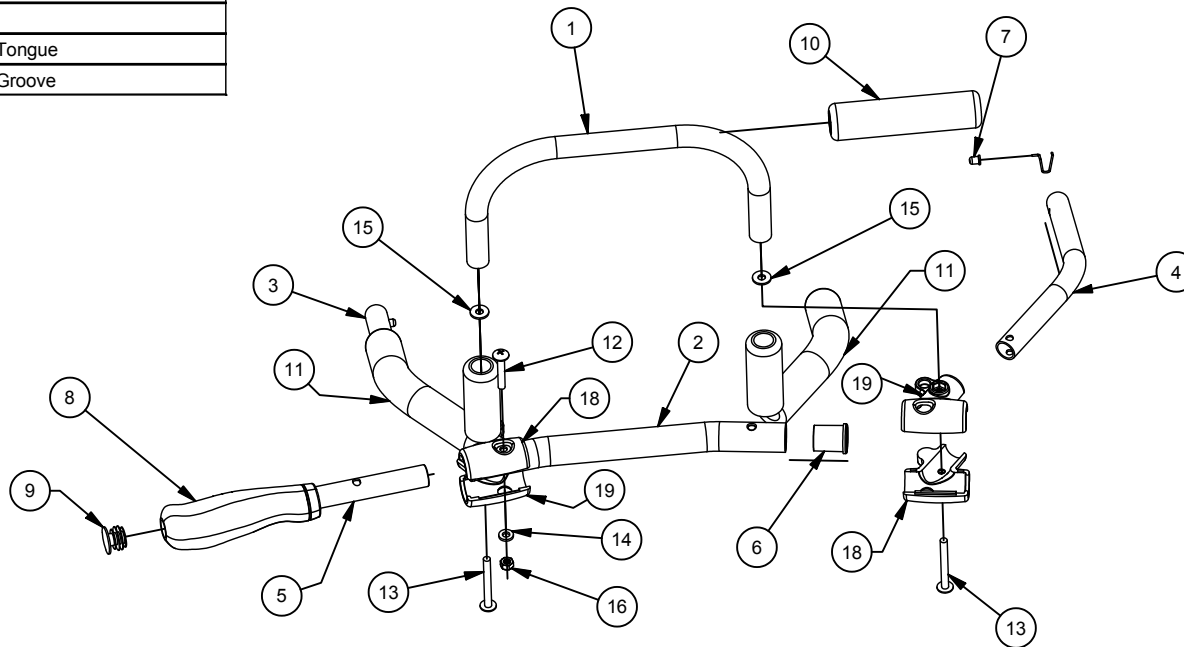
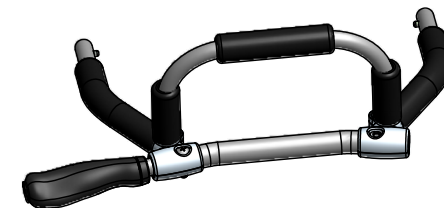


Parts List			
ITEM	QTY	PART #	DESCRIPTION
1	1	40191352	Handlebar - CX1 - U-Frame Sub-Assy
2	1	41191349	Handlebar - CX1 - Middle
3	1	41191350	Handlebar - CX - Riser L
4	1	41191351	Handlebar - CX - Riser R
5	1	41191353	Handlebar - CX - Stub End L
6	2	41192130	Hollow Plug Glide - Cut
7	2	50101004	Wire Button
8	1	50102101	Ergonomic Kraton Grip - Left
9	1	50102103	End Plug - Kraton Grip
10	1	50102104	Foam Grip - 130mm HD Phthalate - Free
11	2	50102105	Foam Grip - 330mm HD Phthalate - Free
12	1	50190508	Bolt - M6x37 Phillips
13	2	50190522	Bolt - M6x55 Phillips
14	1	50190606	Washer - Nylon 6.4mmID, 12.7mmOD, 2mmT
15	2	50190631	Washer - 6.5mmID, 16mmOD, 1.5mmT
16	1	50190709	Nut - M6 Jam Nut
17	2	50191205	Spring Clip
18	2	50193110	Cargo Rack Bracket Tongue
19	2	50193111	Cargo Rack Bracket Groove

PART NUMBER 40105017		SHEET 1 OF 1	
REV	ECO NUMBER	DATE	INITIAL
E-1	ENG	08/06/10	DD
A	2011-43	8/2/11	GEM

B

B



A

A

THIS PRINT IS THE CONFIDENTIAL AND PROPRIETARY PROPERTY OF CHARIOT CARRIERS INC. THE REPRODUCTION OF THIS PRINT, MANUFACTURE OF THE ITEM DESCRIBED HEREON, OR THE DISCLOSURE OF THE SAME IS FORBIDDEN WITHOUT THE EXPRESSED WRITTEN CONSENT OF THE OWNER

MATERIAL
N/A

CONDITION
N/A

FINISH
N/A

UNLESS OTHERWISE SPECIFIED ALL DIMENSIONS ARE IN MILLIMETERS

PERPENDICULAR SURFACES TO BE SQUARE WITHIN .03
TOTAL RUNOUT WITHIN .08 ON COMMON DIAMETERS
ALL DRILLED HOLES TO BE MAX 0.2 mm OVERSIZED

REMOVE SHARP EDGES .15 MAX
FILLETS R.15 MAX
ANGLES ± 0°30'
ALL MACHINED SURFACES
64 MICRO INCHES

TOLERANCE: DECIMAL
X = ± 1 mm
.X = ± .5 mm
.XX = ± .2 mm

DRAWN
GMESZAROS

DATE
10/02/2008



DESCRIPTION
Handlebar Main Assy (SP) CX1

PART NUMBER
40105017

