

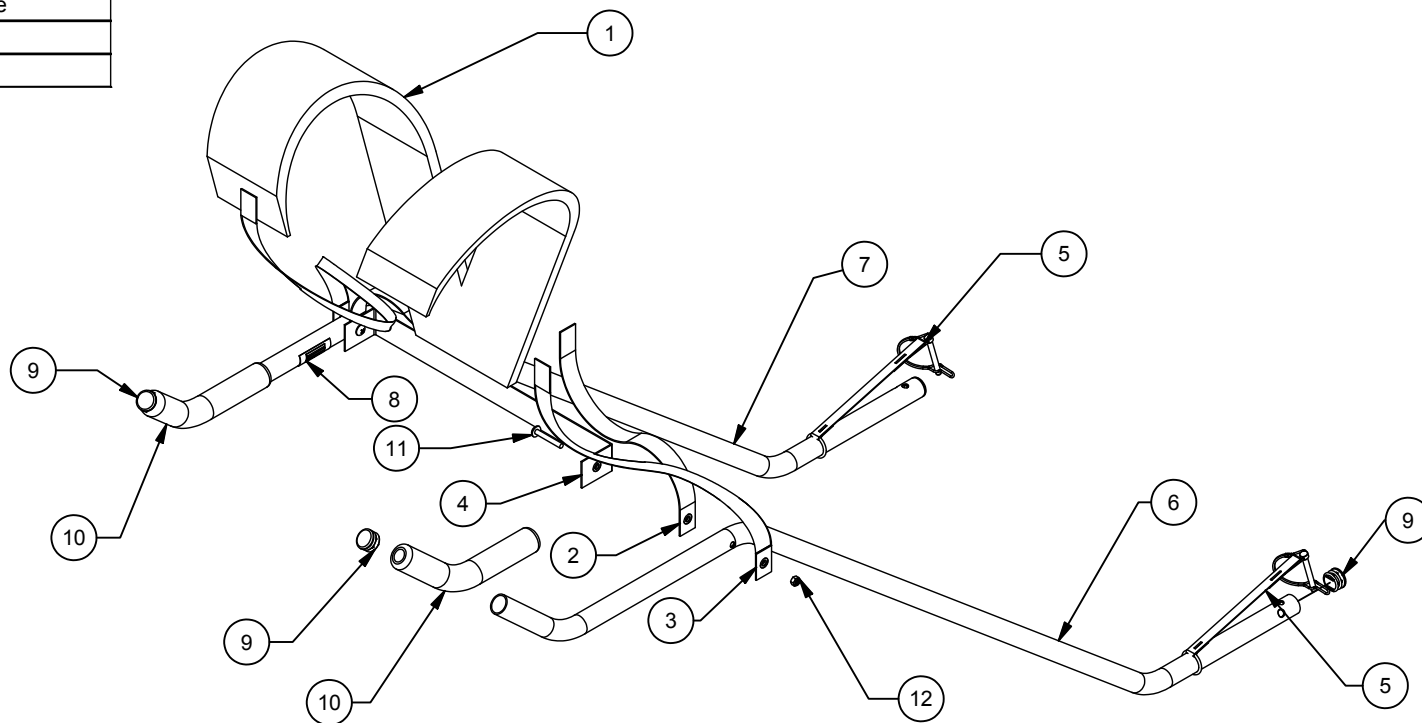
2



1

Parts List			
ITEM	QTY	PART #	DESCRIPTION
1	1	40200108	Hiking Harness
2	1	40202014	Strap - Rear Shoulder Strap - Hiking Kit
3	2	40202015	Strap - Front Shoulder Strap - Hiking Kit
4	1	40202016	Strap - Waistbelt - Hiking Kit
5	2	40202055	Strap - Axle Snap Pin with O-Ring
6	1	41101359	Handlebar Hiking Kit L
7	1	41101360	Handlebar Hiking Kit R
8	1	41102403	Product Tracking Label - 3
9	4	50101404	Cap - End Cap - 1 in RD (short)
10	2	50102107	Foam Grip - 9" - Phthalate-free
11	2	50190510	Bolt - M6x42 Phillips
12	2	50190709	Nut - M6 Jam Nut

PART NUMBER		SHEET	
40103071		1 OF 1	
REV	ECO NUMBER	DATE	INITIAL
A	2012-36	07/18/12	PS



NOTE:

1. PTL SHOULD BE CENTERED AND LEGIBLE ON RIGHT ARM
2. STRAPS IN THIS DWG ARE FOR REFERENCE PURPOSES ONLY
3. VERIFY PROPER ORIENTATION OF THE STRAPS
4. VERIFY FIT, ASSEMBLY AND FUNCTION ON A CARRIER

THIS PRINT IS THE CONFIDENTIAL AND PROPRIETARY PROPERTY OF THULE CHILD TRANSPORT SYSTEMS LTD. THE REPRODUCTION OF THIS PRINT, MANUFACTURE OF THE ITEM DESCRIBED HEREON, OR THE DISCLOSURE OF THE SAME IS FORBIDDEN WITHOUT THE EXPRESSED WRITTEN CONSENT OF THE OWNER

MATERIAL
N/A

CONDITION
N/A

FINISH
N/A

UNLESS OTHERWISE SPECIFIED
ALL DIMENSIONS ARE IN MILLIMETERS

PERPENDICULAR SURFACES TO BE SQUARE WITHIN .03
TOTAL RUNOUT WITHIN .08 ON COMMON DIAMETERS
ALL DRILLED HOLES TO BE MAX 0.2 mm OVERSIZED

REMOVE SHARP EDGES .15 MAX
FILLETS R.15 MAX

ANGLES ±0°30'
ALL MACHINED SURFACES
64 MICRO INCHES

TOLERANCE: DECIMAL

X = ± 1 mm

.X = ± .5 mm

.XX = ± .2 mm



DRAWN

P.SINGH

DATE

9/12/12

DESCRIPTION

Hiking Kit Assembly

PART NUMBER

40103071

2



1

B

B



A

A