

2

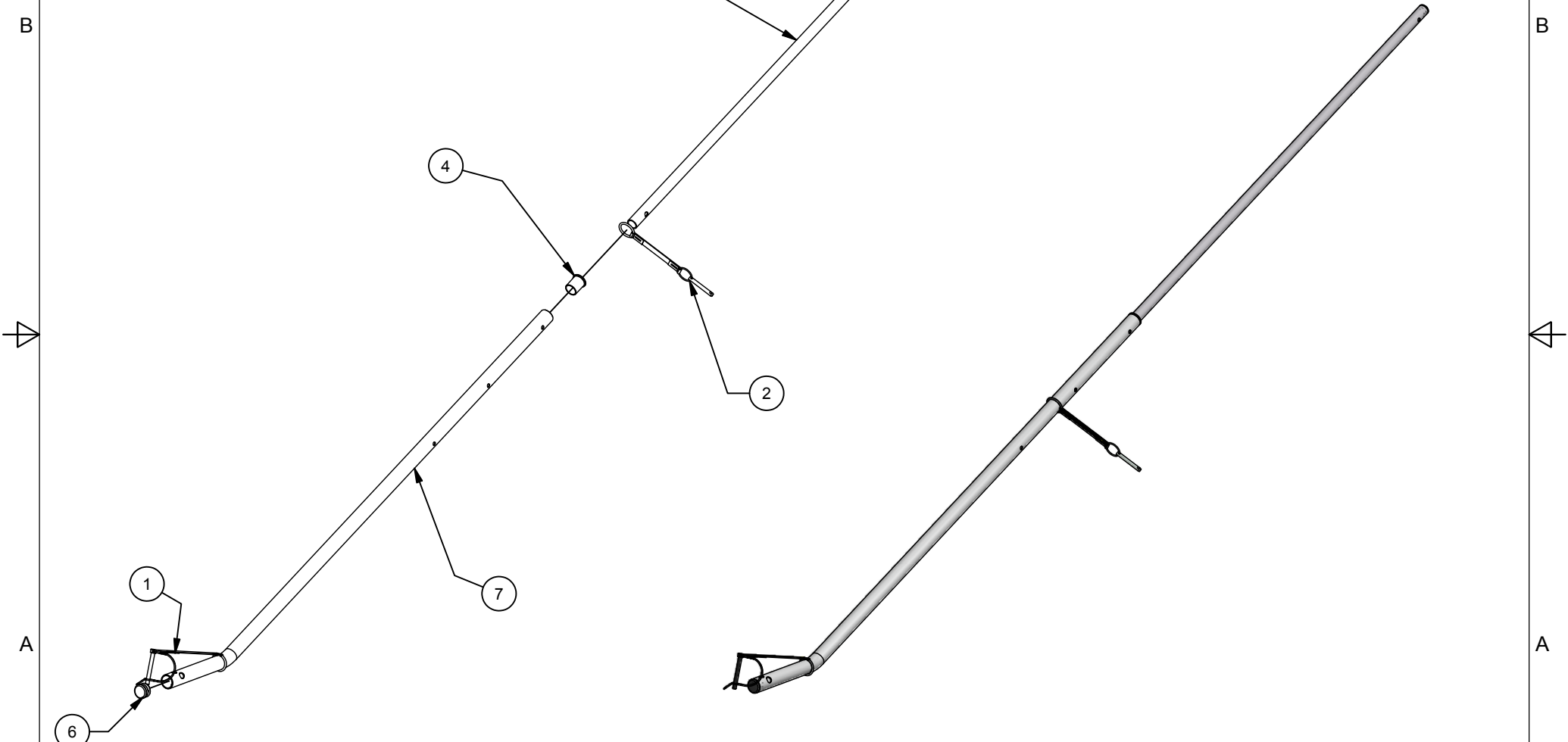


1

Parts List			
ITEM	QTY	PART #	DESCRIPTION
1	1	40202055	Strap - Axle Snap Pin with O-Ring
2	1	40202025	Strap - Securing Pin w/-Ring 2002-X
3	1	41103014	Tow Bar - 3/4" RD
4	1	41192130	Hollow Plug Glide - Cut
5	1	50101402	Cap - End Cap - 3/4" RD (short)
6	1	50101404	Cap - End Cap - 1 in RD (short)
7	1	41103047	Tow Bar - RH - 1" RD

PART NUMBER 40103070		SHEET 1 OF 1	
REV	ECO NUMBER	DATE	INITIAL
A	2012-34	07/09/12	PS

- A 1. Replaces 40103034 for right side.
- 2. Added O-ring on strap. Deleted Rivet and Washer.
- 3. 41103047 replaces 41103013
- 4. Updated BOM and Locking Strap Part Number.



THIS PRINT IS THE CONFIDENTIAL AND PROPRIETARY PROPERTY OF THULE CHILD TRANSPORT SYSTEMS LTD. THE REPRODUCTION OF THIS PRINT, MANUFACTURE OF THE ITEM DESCRIBED HEREON, OR THE DISCLOSURE OF THE SAME IS FORBIDDEN WITHOUT THE EXPRESSED WRITTEN CONSENT OF THE OWNER

MATERIAL As Noted
CONDITION N/A
FINISH N/A

UNLESS OTHERWISE SPECIFIED ALL DIMENSIONS ARE IN MILLIMETERS
 PERPENDICULAR SURFACES TO BE SQUARE WITHIN .03
 TOTAL RUNOUT WITHIN .08 ON COMMON DIAMETERS
 ALL DRILLED HOLES TO BE MAX 0.2 mm OVERSIZED
 REMOVE SHARP EDGES .15 MAX
 FILLETS R.15 MAX
 ANGLES ± 0° 30'
 ALL MACHINED SURFACES 64 MICRO INCHES

TOLERANCE: DECIMAL
 X = ± 1 mm
 .X = ± .5 mm
 .XX = ± .2 mm

DRAWN PSINGH
DATE 7/09/12
DESCRIPTION Ski Arm Assembly - RH

PART NUMBER
40103070

2



1