

2



1

Parts List			
ITEM	QTY	ITEM #	DESCRIPTION
1	1	50100625	Washer 25/64" bowed
2	1	50100722	Nut - Plated - 3/8" - 16
3	1	50103038	CAS Adjustment Knob 3/8" - 16 knob

PART NUMBER 40103056		SHEET 1 OF 1	
REV	ECO NUMBER	DATE	INITIAL
A	2013-31	03/08/13	KM

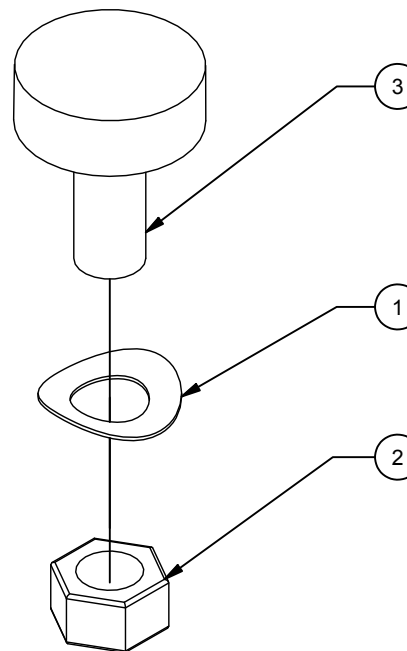
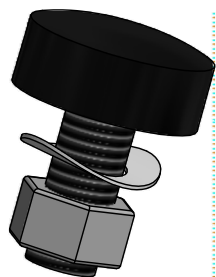
B

B



A

A



(SP) UPC#: 872299016228

THIS PRINT IS THE CONFIDENTIAL AND PROPRIETARY PROPERTY OF THULE CHILD TRANSPORT SYSTEMS LTD. THE REPRODUCTION OF THIS PRINT, MANUFACTURE OF THE ITEM DESCRIBED HEREON, OR THE DISCLOSURE OF THE SAME IS FORBIDDEN WITHOUT THE EXPRESSED WRITTEN CONSENT OF THE OWNER

MATERIAL
N/A

CONDITION
N/A

FINISH
N/A

UNLESS OTHERWISE SPECIFIED ALL DIMENSIONS ARE IN MILLIMETERS

PERPENDICULAR SURFACES TO BE SQUARE WITHIN .03
TOTAL RUNOUT WITHIN .08 ON COMMON DIAMETERS
ALL DRILLED HOLES TO BE MAX 0.2 mm OVERSIZED

REMOVE SHARP EDGES .15 MAX
FILLETS R.15 MAX
ANGLES ± 0° 30'
ALL MACHINED SURFACES
64 MICRO INCHES

TOLERANCE: DECIMAL
X = ± 1 mm
.X = ± .5 mm
.XX = ± .2 mm

DRAWN
KMendes

DATE
08/03/2013

DESCRIPTION
CAS Hardware CGR/CX/COR/CAP 02-08/05-11/05-11/ 07-11



PART NUMBER
40103056

2



1