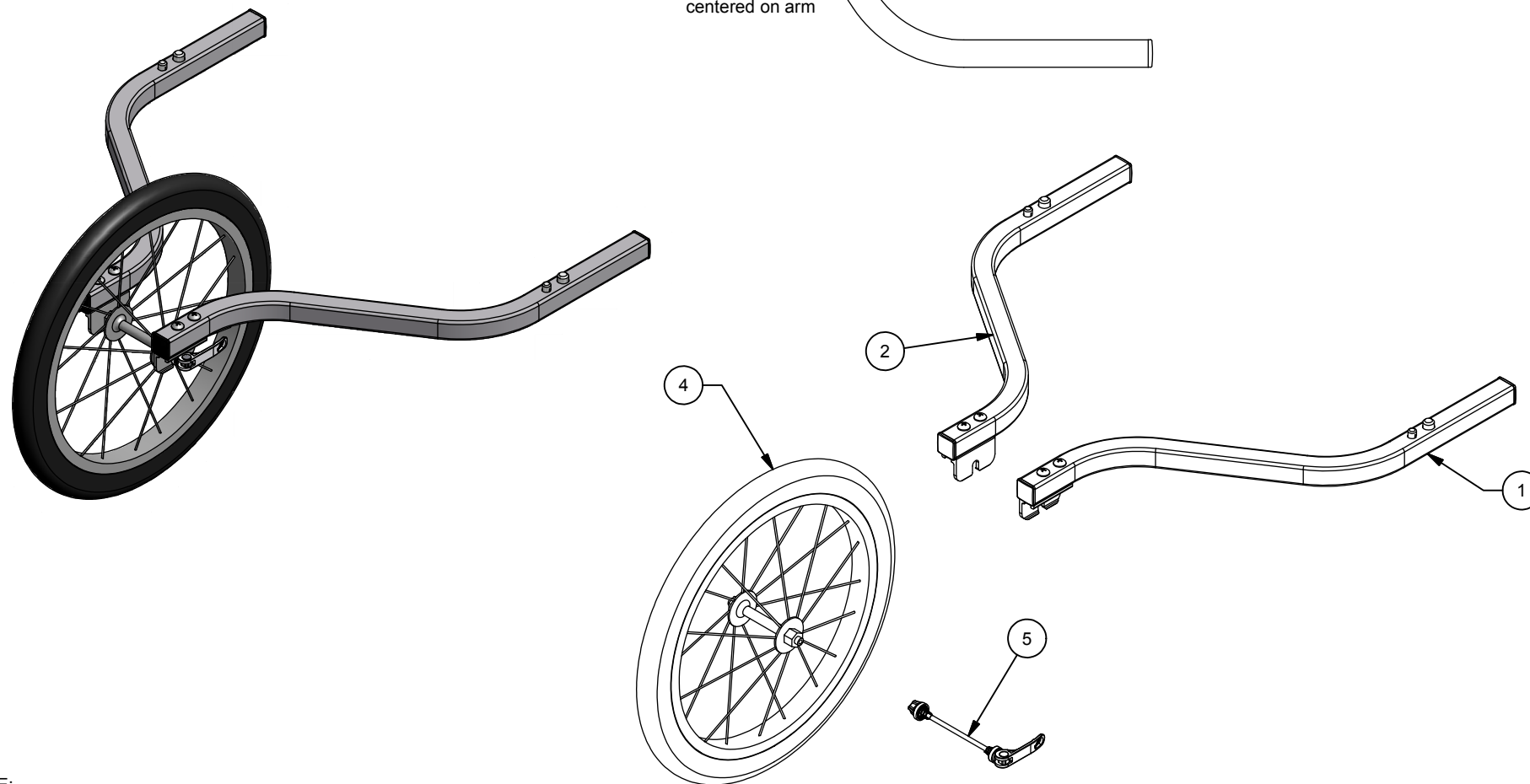
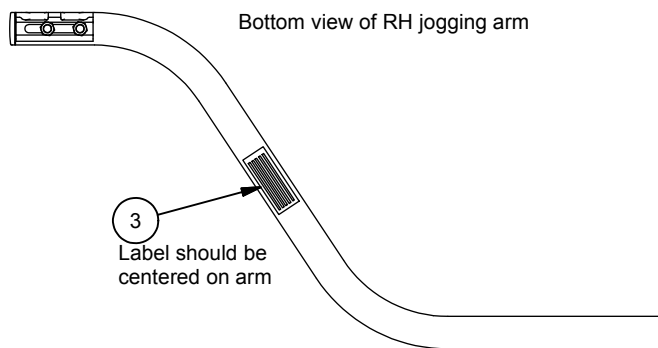


2

1

Parts List			
ITEM	QTY	PART #	DESCRIPTION
1	1	40101051	Wheel Arm Assy, L COR2/CAB2/CAP2
2	1	40101052	Wheel Arm Assy, R COR2/CAB2/CAP2
3	1	41102403	Product Tracking Label - 3
4	1	50101730	Wheel - Spoked 16"
5	1	50103012	QR Skewer for Wheel

PART NUMBER		SHEET	
40101050		1 OF 1	
REV	ECO NUMBER	DATE	INITIAL
A	2012-5	03/22/12	GM



NOTE:  
1. Verify fit, assembly and function on a carrier

THIS PRINT IS THE CONFIDENTIAL AND PROPRIETARY PROPERTY OF THULE CHILD TRANSPORT SYSTEMS LTD. THE REPRODUCTION OF THIS PRINT, MANUFACTURE OF THE ITEM DESCRIBED HEREON, OR THE DISCLOSURE OF THE SAME IS FORBIDDEN WITHOUT THE EXPRESSED WRITTEN CONSENT OF THE OWNER

MATERIAL  
N/A

CONDITION  
N/A

FINISH  
N/A

**UNLESS OTHERWISE SPECIFIED  
ALL DIMENSIONS ARE IN MILLIMETERS**

PERPENDICULAR SURFACES TO BE SQUARE WITHIN .03  
TOTAL RUNOUT WITHIN .08 ON COMMON DIAMETERS  
ALL DRILLED HOLES TO BE MAX 0.2 mm OVERSIZED

REMOVE SHARP EDGES .15 MAX  
FILLETS R.15 MAX  
ANGLES ±0°30'  
ALL MACHINED SURFACES  
64 MICRO INCHES

TOLERANCE: DECIMAL  
X = ± 1 mm  
.X = ± .5 mm  
.XX = ± .2 mm

DRAWN

DD

DATE

08/07/2011

DESCRIPTION

Jogging Kit Assembly, COR2/CAB2/CAP2

PART NUMBER

40101050

2

1