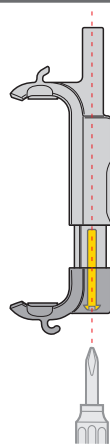




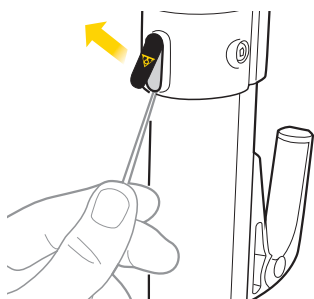
TENSION ADJUSTMENT



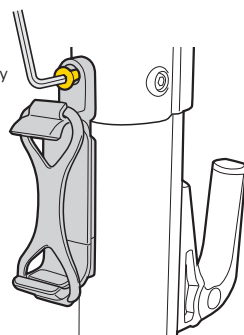
FLOOR PUMPS INSTALL

COMPATIBLE WITH TOPEAK FLOOR PUMP JOEBLOW™ ELITE | TRANSFORMER™ X | TRANSFORMER™ XX

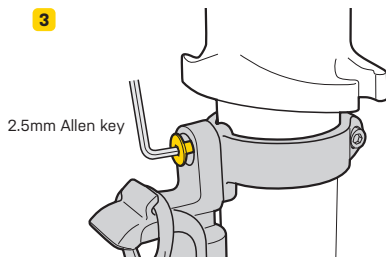
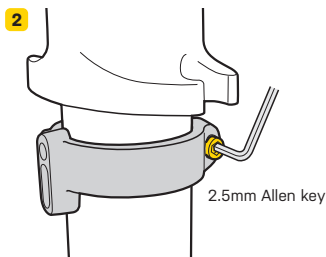
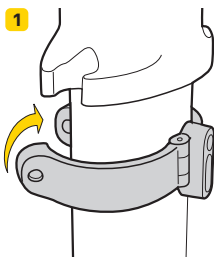
1
Remove plate.



2
2.5mm Allen key



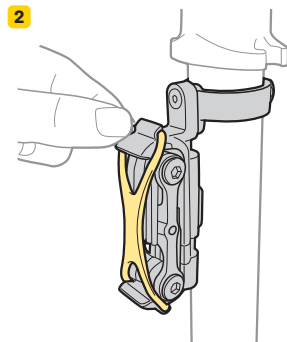
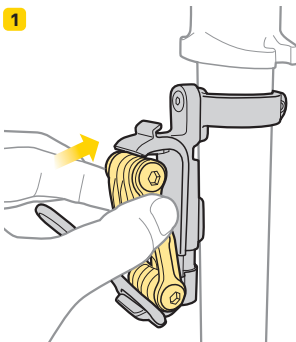
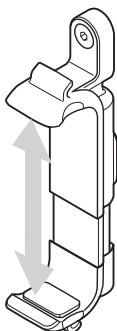
COMPATIBLE WITH TOPEAK FLOOR PUMP JOEBLOW™ SPORT II | JOEBLOW™ MAX HP



MINI TOOLS INSTALL

COMPATIBLE WITH TOPEAK MINI TOOL ALIEN™ III | ALIEN™ XS | MINI 20 PRO | MINI 9 PRO CARBON | MINI 9 PRO | MINI 18+ | MINI 10 | MINI 9 | MINI 6 | LUMITOOL 7

Fits mini-tools
6~8.2 cm



WARRANTY

2-year Warranty: All mechanical components against manufacturer defects only.

Warranty Claim Requirements

To obtain warranty service, you must have your original sales receipt. Items returned without a sales receipt will assume that the warranty begins on the date of manufacture. All warranties will be void if the product is damaged due to user crash, abuse, system alteration, modification, or used in any way not intended as described in this manual.

* The specifications and design are subject to change without notice.

Please contact your Topeak dealer with any questions. For USA customer service, call: 1-800-250-3068
www.topeak.com