

Ratchet combination wrench

160/2



Profiles

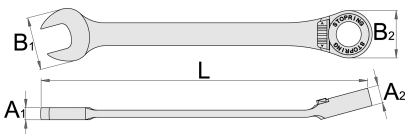


Product features

- material: premium chrome vanadium steel
- drop forged, entirely hardened and tempered

Advantages:

- ratchet: works both way, screw direction can be changed with button
- 72 - teeth, 5° working angle
- Stop ring on the ring part of the wrench prevents unexpected slip of the wrench from the nut and positioning back on the nut.
- It enables quick and easy tightening of the nut without causing damage to the user and quick, save and precise positioning of the wrench on the nut.



Barcode	mm	L	B2	B1	A2	A1	Icon
622818	8	134	17,1	16,7	8,4	4,7	40
622819	9	158	21	21	8,4	5,5	55

		L	B2	B1	A2	A1	
622820	10	158	21	21	8,4	5,5	60
622821	11	164	22,6	23	9,7	6	70
622822	12	167	23,8	25	9,7	6,2	80
622823	13	177	24,9	27,5	9,7	6,0	96
622824	14	189	27	29	10,1	7	125
622825	15	198	28,1	31,5	11,7	7,2	150
622826	16	204	29,9	33	11,7	7,5	165
622827	17	224	31,9	34,9	11,7	8	183
622828	18	245	34,4	38,9	12	8,8	210
622829	19	245	34,4	38,9	19	12	230
622831	21	280	45,7	42,6	14,2	9,5	358
622832	22	280	45,7	42,6	14,2	9,5	378
622834	24	310	51,7	46,5	14,7	10	480

* Images of products are symbolic. All dimensions are in mm, and weight in grams. All listed dimensions may vary in tolerance.

Usage (pictures)

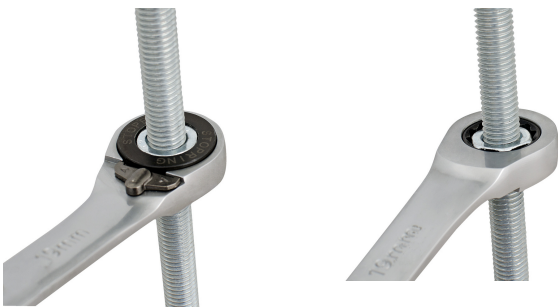
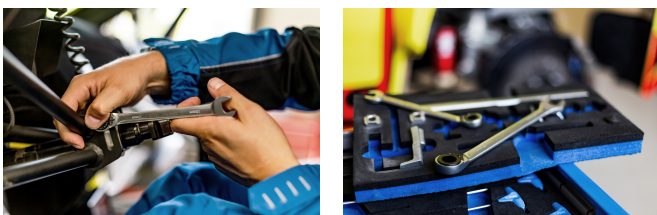


Photo (pictures)



Frequently asked questions

Do wrenches with a ratchet need to be oiled?

No, the ratchet mechanism should not be oiled, but the dirt should be removed with a non-corrosive cleaning agent.