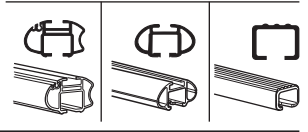
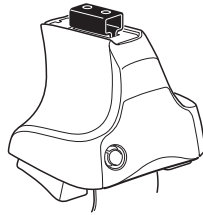


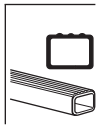
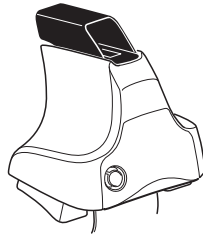
# Kit 1442

VOLKSWAGEN Passat (B6), 4-dr Sedan, 05-

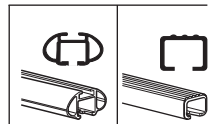
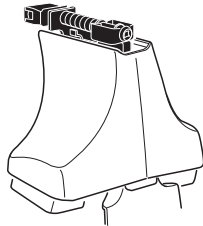
480R  
754



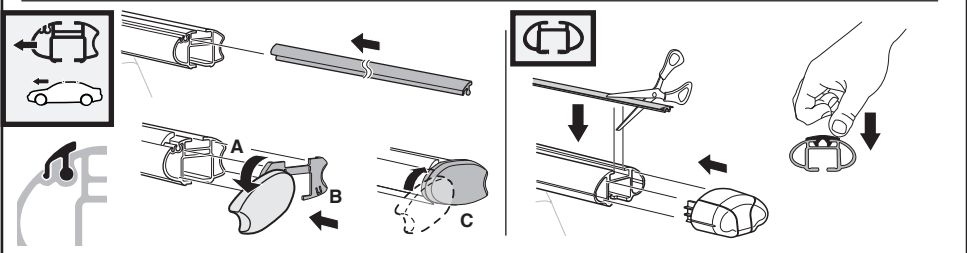
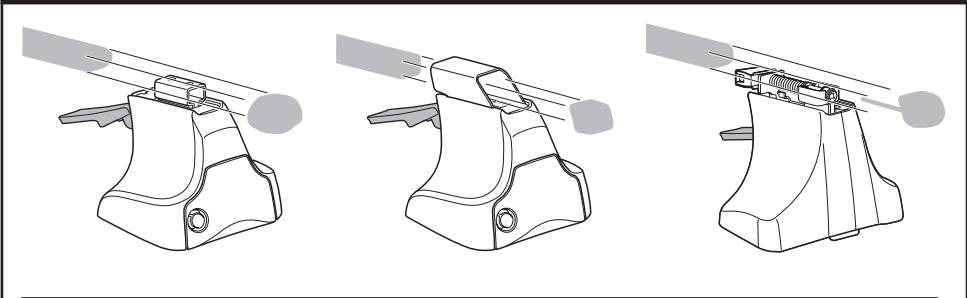
480



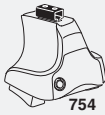
750



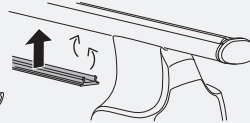
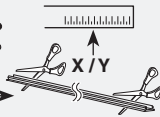
**Kit**



**3**



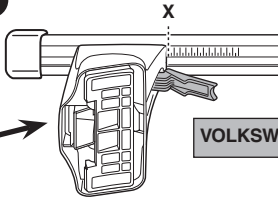
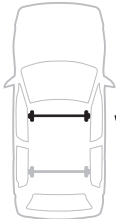
754



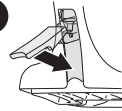
750



**1**



**2**

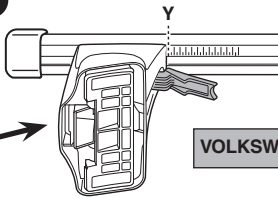
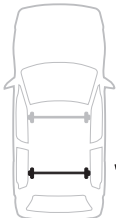


**VOLKSWAGEN Passat (B6), 4-dr Sedan, 05-**

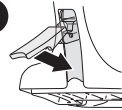
**X**

**40,5**

**1**



**2**



**VOLKSWAGEN Passat (B6), 4-dr Sedan, 05-**

**Y**

**39**

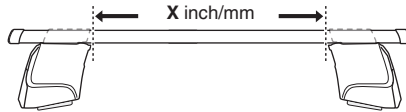


480R

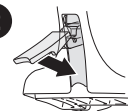


480

**1**



**2**



**VOLKSWAGEN Passat (B6), 4-dr Sedan, 05-**

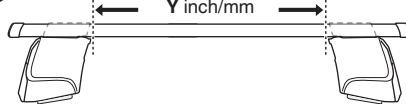
**X inch**

**41 5/8"**

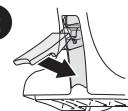
**X mm**

**1056 mm**

**1**



**2**



**VOLKSWAGEN Passat (B6), 4-dr Sedan, 05-**

**Y inch**

**41"**

**Y mm**

**1041 mm**

4

VOLKSWAGEN Passat (B6), 4-dr Sedan, 05-

164



897



FL



163



898



FR



163



725



RL



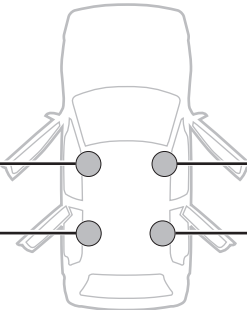
164



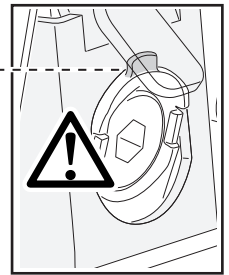
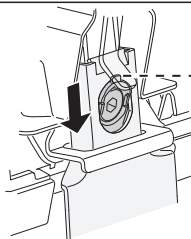
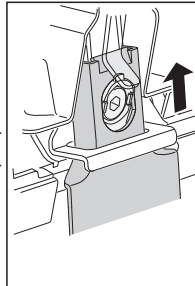
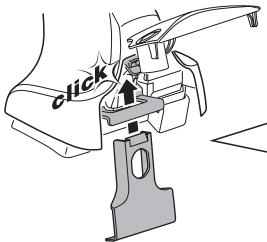
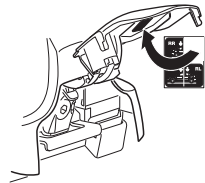
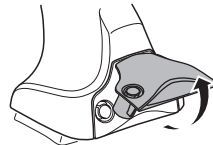
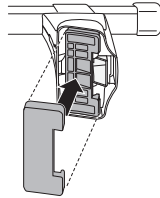
726



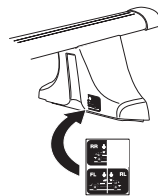
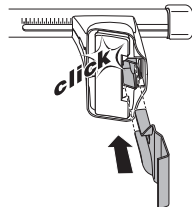
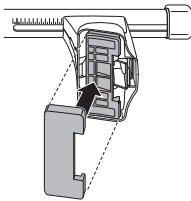
RR



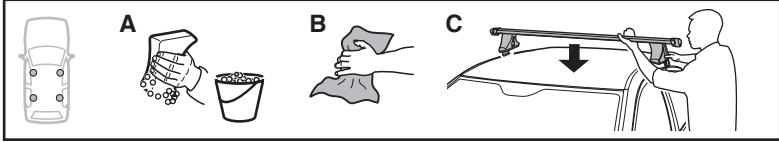
480R/754 480



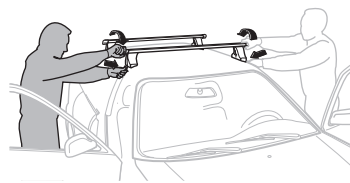
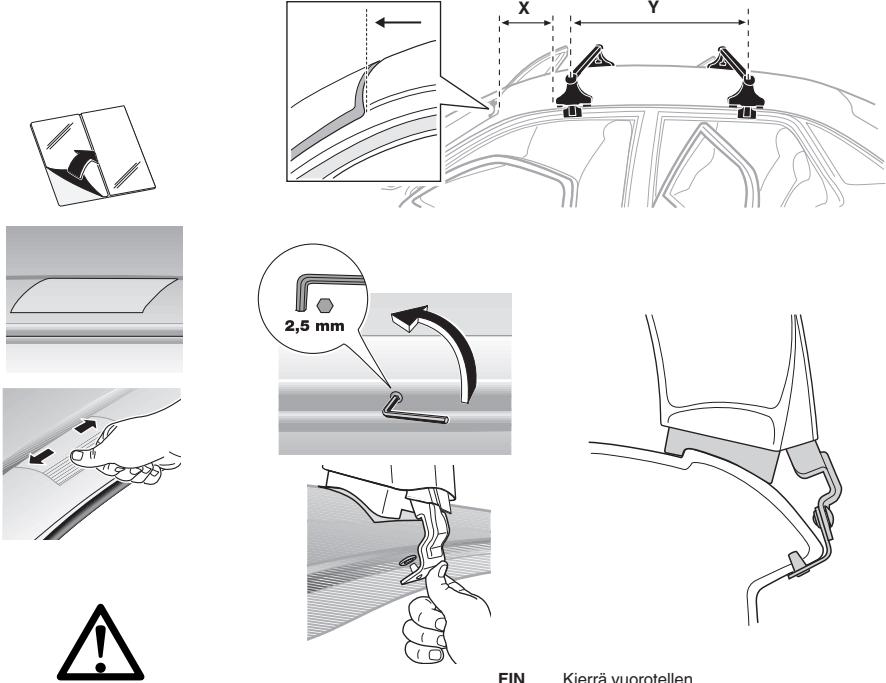
750



5



	X mm	Y mm	X inch	Y inch
VOLKSWAGEN Passat (B6), 4-dr Sedan, 05-	270 mm	775 mm	10 <sup>5</sup> / <sub>8</sub> "	30 <sup>1</sup> / <sub>2</sub> "



- GB/US Tighten alternately
- D Die Schrauben abwechselnd anziehen
- F Serrer alternativement chaque côté
- NL Afwisselend aan de linker- en de rechterkant aandraaien
- I Alternare il serraggio delle viti
- E Serrare alternativamente
- PT Aperte alternadamente
- S Dra åt växelvis

- FIN Kierrä vuorotellen
- EST Pinguldage vaheldumisi
- LAT Pielvecliet pamišus
- LIT Užsukinėkite pakaitomis
- PL Śruby dokręcaj naprzemiennie
- RU Затягивайте попеременно
- CZ Pokręťta bagażníka dokręcaj dokręcaj naprzemiennie.
- SK Doťahujte striedavo
- SLO Privijajte izmenično.
- HR Naizmjenično zategnite
- HU Egymástól függetlenül szorítandó
- GR Σφιγγετε εναλλάξ
- TR Dönüşümlü sıkın
- 中文 交替拧紧
- 한국어 번갈아 가며 조이십시오.
- 日本語 交互に締め付けてください。
- ไทย ชั้้นโนแบบสลับ

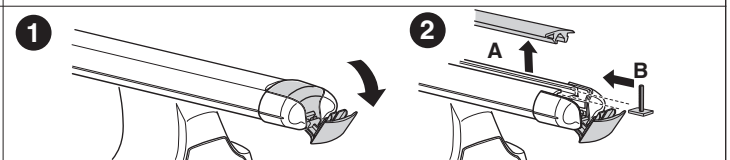
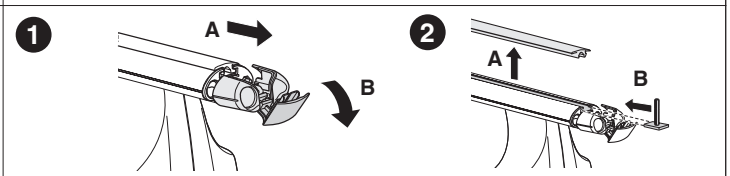
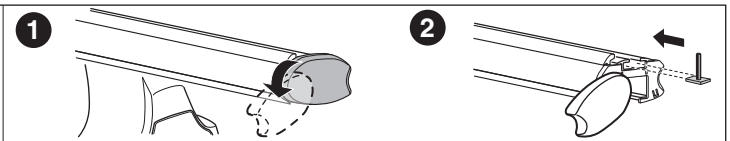
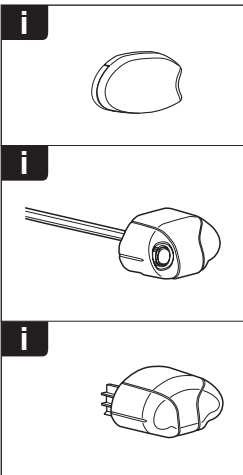
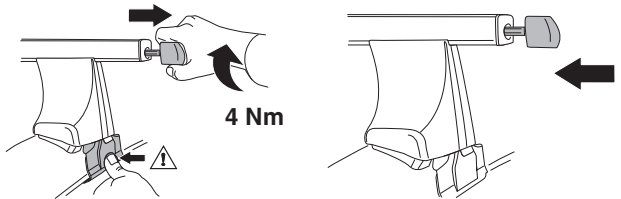
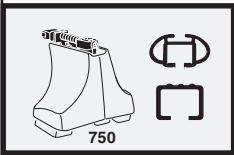
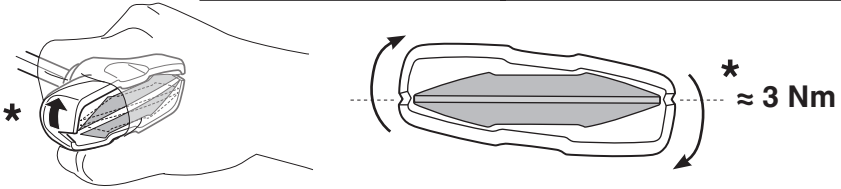
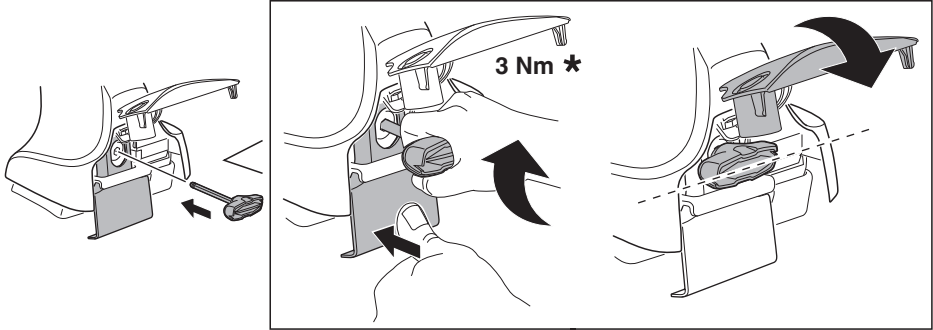
6

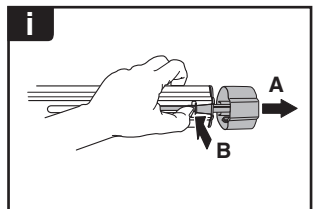
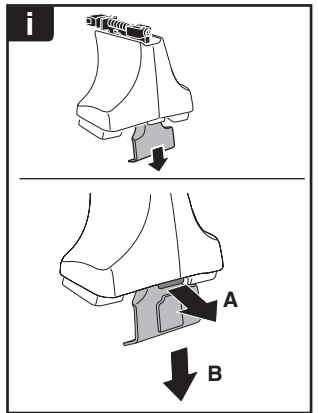
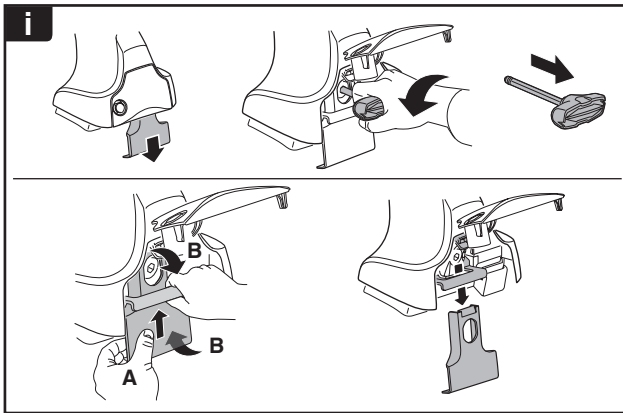
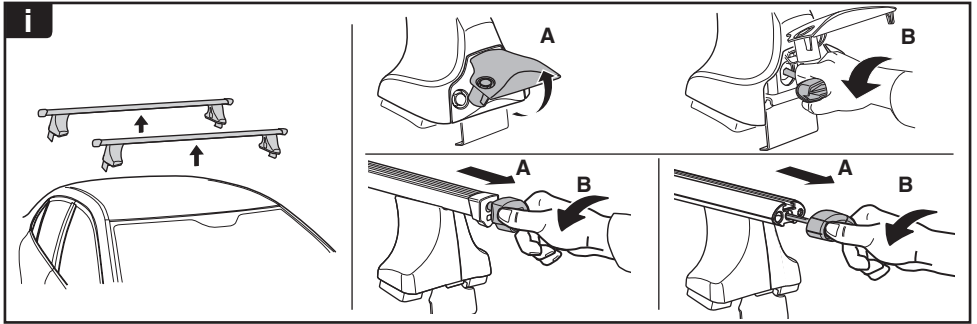


480R/754



480

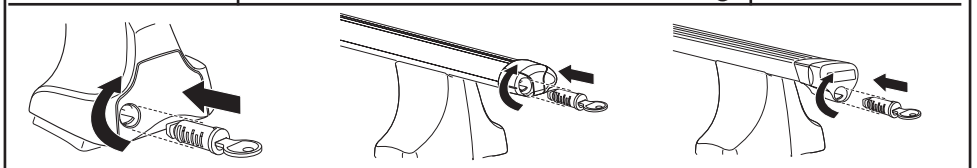




**THULE**  
SWEDEN  
**ONE  
KEY  
SYSTEM**



		544	(x4)
		596	(x6)
		588	(x8)
NA		510	(x10)
EUR		452	(x12)
ASIA			



WW ▶ Thule Sweden AB, Box 69, 330 33 Hillerstorp, SWEDEN  
NA ▶ Thule Inc., 42 Silvermine Road, Seymour, Connecticut 06483, USA

info@thule.com  
customer.service@thule.com

www.thule.com